

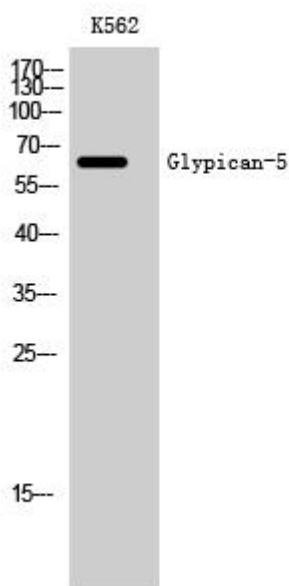


Glypican-5 Monoclonal Antibody

Catalog No	YP-mAb-03903
Isotype	IgG
Reactivity	Human;Mouse;Rat
Applications	WB
Gene Name	GPC5
Protein Name	Glypican-5
Immunogen	Synthesized peptide derived from the Internal region of human Glypican-5.
Specificity	Glypican-5 Monoclonal Antibody detects endogenous levels of Glypican-5 protein.
Formulation	Liquid in PBS containing 50% glycerol, 0.5% BSA and 0.02% sodium azide.
Source	Monoclonal, Mouse,IgG
Purification	The antibody was affinity-purified from mouse antiserum by affinity-chromatography using epitope-specific immunogen.
Dilution	WB 1:500-1:2000
Concentration	1 mg/ml
Purity	≥90%
Storage Stability	-20°C/1 year
Synonyms	GPC5; Glypican-5
Observed Band	65kD
Cell Pathway	Cell membrane ; Lipid-anchor, GPI-anchor ; Extracellular side .; [Secreted glypican-5]: Secreted, extracellular space .
Tissue Specificity	In adult, primarily expressed in the brain. Also detected in fetal brain, lung and liver.
Function	function:Cell surface proteoglycan that bears heparan sulfate.,similarity:Belongs to the glypican family.,tissue specificity:In adult, primarily expressed in the brain. Also detected in fetal brain, lung and liver.,
Background	Cell surface heparan sulfate proteoglycans are composed of a membrane-associated protein core substituted with a variable number of heparan sulfate chains. Members of the glypican-related integral membrane proteoglycan family (GRIPS) contain a core protein anchored to the cytoplasmic membrane via a glycosyl phosphatidylinositol linkage. These proteins may play a role in the control of cell division and growth regulation. [provided by RefSeq, Jul 2008],
matters needing attention	Avoid repeated freezing and thawing!

**Usage suggestions**

This product can be used in immunological reaction related experiments. For more information, please consult technical personnel.

Products Images

Western Blot analysis of various cells using Glypican-5 Monoclonal Antibody