

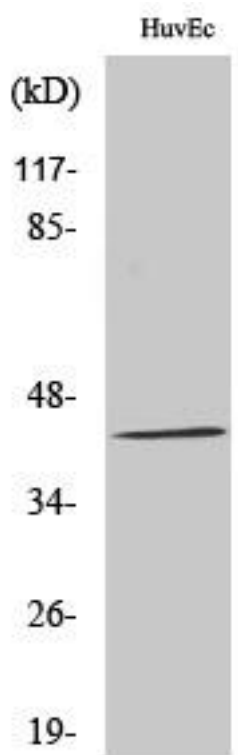


# GALK1 Monoclonal Antibody

<b>Catalog No</b>	YP-mAb-03888
<b>Isotype</b>	IgG
<b>Reactivity</b>	Human;Mouse;Rat
<b>Applications</b>	WB
<b>Gene Name</b>	GALK1
<b>Protein Name</b>	Galactokinase
<b>Immunogen</b>	The antiserum was produced against synthesized peptide derived from human GALK1. AA range:1-50
<b>Specificity</b>	GALK1 Monoclonal Antibody detects endogenous levels of GALK1 protein.
<b>Formulation</b>	Liquid in PBS containing 50% glycerol, 0.5% BSA and 0.02% sodium azide.
<b>Source</b>	Monoclonal, Mouse,IgG
<b>Purification</b>	The antibody was affinity-purified from mouse antiserum by affinity-chromatography using epitope-specific immunogen.
<b>Dilution</b>	WB 1:500-1:2000
<b>Concentration</b>	1 mg/ml
<b>Purity</b>	≥90%
<b>Storage Stability</b>	-20°C/1 year
<b>Synonyms</b>	GALK1; GALK; Galactokinase; Galactose kinase
<b>Observed Band</b>	45kD
<b>Cell Pathway</b>	cytoplasm,cytosol,membrane,extracellular exosome,
<b>Tissue Specificity</b>	Blood,Brain,Fetal brain cortex,Lung,
<b>Function</b>	catalytic activity:ATP + D-galactose = ADP + alpha-D-galactose 1-phosphate.,disease:Defects in GALK1 are the cause of galactosemia II [MIM:230200]. It is an autosomal recessive deficiency characterized by congenital cataracts during infancy and presenile cataracts in the adult population. The cataracts are secondary to accumulation of galactitol in the lenses.,function:Major enzyme for galactose metabolism.,pathway:Carbohydrate metabolism; galactose metabolism.,similarity:Belongs to the GHMP kinase family.,similarity:Belongs to the GHMP kinase family. Galk subfamily.,
<b>Background</b>	Galactokinase is a major enzyme for the metabolism of galactose and its deficiency causes congenital cataracts during infancy and presenile cataracts in the adult population. [provided by RefSeq, Jul 2008],
<b>matters needing attention</b>	Avoid repeated freezing and thawing!

**Usage suggestions**

This product can be used in immunological reaction related experiments. For more information, please consult technical personnel.

**Products Images**

Western Blot analysis of various cells using GALK1 Monoclonal Antibody