



# Fyb Monoclonal Antibody

|                           |   |
|---------------------------|---|
| <b>Catalog No</b>         | YP-mAb-03882  |
| <b>Isotype</b>            | IgG   |
| <b>Reactivity</b>         | Human;Mouse;Rat   |
| <b>Applications</b>       | WB  |
| <b>Gene Name</b>          | FYB   |
| <b>Protein Name</b>       | FYN-binding protein   |
| <b>Immunogen</b>          | Synthesized peptide derived from Fyb . at AA range: 620-700   |
| <b>Specificity</b>        | Fyb Monoclonal Antibody detects endogenous levels of Fyb protein.   |
| <b>Formulation</b>        | Liquid in PBS containing 50% glycerol, 0.5% BSA and 0.02% sodium azide.   |
| <b>Source</b>             | Monoclonal, Mouse,IgG   |
| <b>Purification</b>       | The antibody was affinity-purified from mouse antiserum by affinity-chromatography using epitope-specific immunogen.  |
| <b>Dilution</b>           | WB 1:500-1:2000   |
| <b>Concentration</b>      | 1 mg/ml   |
| <b>Purity</b>             | ≥90%  |
| <b>Storage Stability</b>  | -20°C/1 year  |
| <b>Synonyms</b>           | FYB; SLAP130; FYN-binding protein; Adhesion and degranulation promoting adaptor protein; ADAP; FYB-120/130; p120/p130; FYN-T-binding protein; SLAP-130; SLP-76-associated phosphoprotein  |
| <b>Observed Band</b>      | 85kD  |
| <b>Cell Pathway</b>       | Cytoplasm . Nucleus . Cell junction . Colocalizes with TMEM47 at cell-cell contacts in podocytes. .   |
| <b>Tissue Specificity</b> | Expressed in hematopoietic tissues such as myeloid and T-cells, spleen and thymus. Not expressed in B-cells, nor in non-lymphoid tissues.   |
| <b>Function</b>           | function:Acts as an adapter protein of the FYN and LCP2 signaling cascades in T cells. Modulates the expression of interleukin-2 (IL-2). Involved in platelet activation. Prevents the degradation of SKAP1 and SKAP2.,PTM:T-cell receptor ligation leads to increased tyrosine phosphorylation.,similarity:Contains 1 SH3 domain.,subunit:Part of a complex consisting of SKAP2, FYB and PTPNS1. Part of a complex consisting of SKAP2, FYB and LILRB3 (By similarity). Interacts with FYN, LCP2, SKAP1 and SKAP2.,tissue specificity:Expressed in hematopoietic tissues such as myeloid and T-cells, spleen and thymus. Not expressed in B-cells, nor in non-lymphoid tissues., |
| <b>Background</b>         | The protein encoded by this gene is an adapter for the FYN protein and LCP2 signaling cascades in T-cells. The encoded protein is involved in platelet activation and controls the expression of interleukin-2. Three transcript variants   |



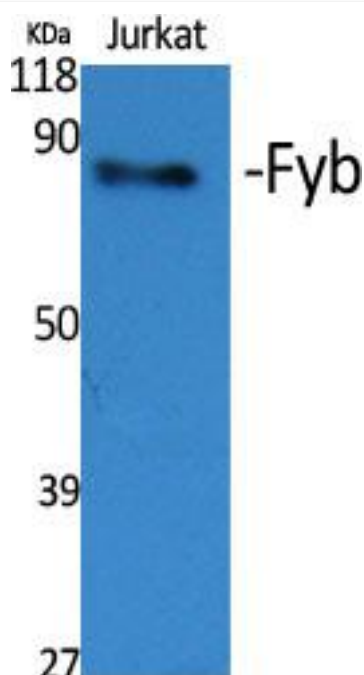
encoding different isoforms have been found for this gene. [provided by RefSeq, Jul 2011],

**matters needing attention**

Avoid repeated freezing and thawing!

**Usage suggestions**

This product can be used in immunological reaction related experiments. For more information, please consult technical personnel.

**Products Images**

Western Blot analysis of various cells using Fyb Monoclonal Antibody