



# eIF5A2 Monoclonal Antibody

<b>Catalog No</b>	YP-mAb-03852
<b>Isotype</b>	IgG
<b>Reactivity</b>	Human;Mouse
<b>Applications</b>	WB
<b>Gene Name</b>	EIF5A2
<b>Protein Name</b>	Eukaryotic translation initiation factor 5A-2
<b>Immunogen</b>	The antiserum was produced against synthesized peptide derived from human eIF5A2. AA range:78-127
<b>Specificity</b>	eIF5A2 Monoclonal Antibody detects endogenous levels of eIF5A2 protein.
<b>Formulation</b>	Liquid in PBS containing 50% glycerol, 0.5% BSA and 0.02% sodium azide.
<b>Source</b>	Monoclonal, Mouse,IgG
<b>Purification</b>	The antibody was affinity-purified from mouse antiserum by affinity-chromatography using epitope-specific immunogen.
<b>Dilution</b>	WB 1:500-1:2000
<b>Concentration</b>	1 mg/ml
<b>Purity</b>	≥90%
<b>Storage Stability</b>	-20°C/1 year
<b>Synonyms</b>	EIF5A2; Eukaryotic translation initiation factor 5A-2; eIF-5A-2; eIF-5A2; Eukaryotic initiation factor 5A isoform 2
<b>Observed Band</b>	17kD
<b>Cell Pathway</b>	Cytoplasm . Nucleus . Endoplasmic reticulum membrane ; Peripheral membrane protein ; Cytoplasmic side . Nucleus, nuclear pore complex . Hypusine modification promotes the nuclear export and cytoplasmic localization and there was a dynamic shift in the localization from predominantly cytoplasmic to primarily nuclear under apoptotic inducing conditions. .
<b>Tissue Specificity</b>	Expressed in ovarian and colorectal cancer cell lines (at protein level). Highly expressed in testis. Overexpressed in some cancer cells.
<b>Function</b>	function:The precise role of eIF-5A in protein biosynthesis is not known but it functions by promoting the formation of the first peptide bond.,PTM:eIF-5A seems to be the only eukaryotic protein to have an hypusine residue which is a post-translational modification of a lysine by the addition of a butylamino group (from spermidine).,similarity:Belongs to the eIF-5A family.,tissue specificity:Expressed in ovarian and colorectal cancer cell lines (at protein level). Highly expressed in testis. Overexpressed in some cancer cells.,
<b>Background</b>	function:The precise role of eIF-5A in protein biosynthesis is not known but it functions by promoting the formation of the first peptide bond.,PTM:eIF-5A seems to be the only eukaryotic protein to have an hypusine residue which is a



post-translational modification of a lysine by the addition of a butylamino group (from spermidine).,similarity:Belongs to the eIF-5A family.,tissue specificity:Expressed in ovarian and colorectal cancer cell lines (at protein level). Highly expressed in testis. Overexpressed in some cancer cells.,

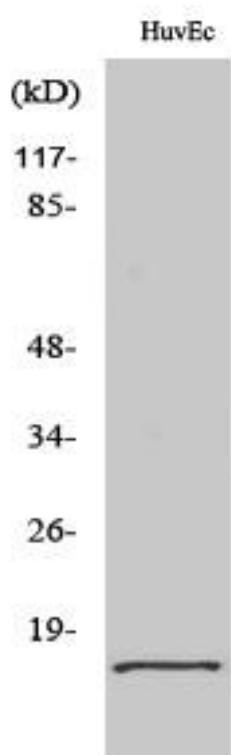
**matters needing attention**

Avoid repeated freezing and thawing!

**Usage suggestions**

This product can be used in immunological reaction related experiments. For more information, please consult technical personnel.

**Products Images**



Western Blot analysis of various cells using eIF5A2 Monoclonal Antibody