

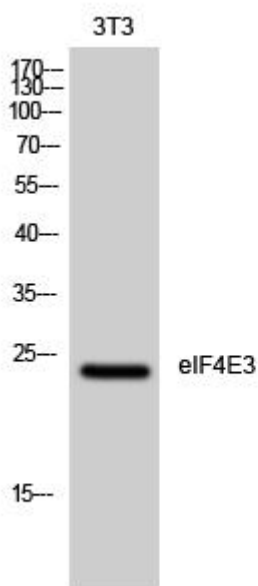


# eIF4E3 Monoclonal Antibody

<b>Catalog No</b>	YP-mAb-03849
<b>Isotype</b>	IgG
<b>Reactivity</b>	Human;Mouse;Rat
<b>Applications</b>	WB
<b>Gene Name</b>	EIF4E3
<b>Protein Name</b>	Eukaryotic translation initiation factor 4E type 3
<b>Immunogen</b>	The antiserum was produced against synthesized peptide derived from human EIF4E3. AA range:141-190
<b>Specificity</b>	eIF4E3 Monoclonal Antibody detects endogenous levels of eIF4E3 protein.
<b>Formulation</b>	Liquid in PBS containing 50% glycerol, 0.5% BSA and 0.02% sodium azide.
<b>Source</b>	Monoclonal, Mouse,IgG
<b>Purification</b>	The antibody was affinity-purified from mouse antiserum by affinity-chromatography using epitope-specific immunogen.
<b>Dilution</b>	WB 1:500-1:2000
<b>Concentration</b>	1 mg/ml
<b>Purity</b>	≥90%
<b>Storage Stability</b>	-20°C/1 year
<b>Synonyms</b>	EIF4E3; Eukaryotic translation initiation factor 4E type 3; eIF-4E type 3; eIF-4E3; eIF4E type 3; eIF4E-3
<b>Observed Band</b>	24kD
<b>Cell Pathway</b>	cytoplasm,cytosol,mRNA cap binding complex,
<b>Tissue Specificity</b>	Brain,
<b>Function</b>	function:Recognizes and binds the 7-methylguanosine-containing mRNA cap during an early step in the initiation of protein synthesis. May act as an inhibitor of EIF4E1 activity.,similarity:Belongs to the eukaryotic initiation factor 4E family.,subunit:eIF4F is a multi-subunit complex, the composition of which varies with external and internal environmental conditions. It is composed of at least eIF4A, eIF4E and eIF4G (By similarity). EIF4E3 interacts with EIF4G1, but not with EIF4EBP1, EIF4EBP2 and EIF4EBP3.,
<b>Background</b>	EIF4E3 belongs to the EIF4E family of translational initiation factors that interact with the 5-prime cap structure of mRNA and recruit mRNA to the ribosome (Joshi et al., 2004 [PubMed 15153109]).[supplied by OMIM, Mar 2008],
<b>matters needing attention</b>	Avoid repeated freezing and thawing!

**Usage suggestions**

This product can be used in immunological reaction related experiments. For more information, please consult technical personnel.

**Products Images**

Western Blot analysis of various cells using eIF4E3 Monoclonal Antibody