



Dvl-3 Monoclonal Antibody

| | |
|---------------------------|---|
| Catalog No | YP-mAb-03830 |
| Isotype | IgG |
| Reactivity | Human;Mouse |
| Applications | WB |
| Gene Name | DVL3 |
| Protein Name | Segment polarity protein dishevelled homolog DVL-3 |
| Immunogen | The antiserum was produced against synthesized peptide derived from human DVL3. AA range:326-375 |
| Specificity | Dvl-3 Monoclonal Antibody detects endogenous levels of Dvl-3 protein. |
| Formulation | Liquid in PBS containing 50% glycerol, 0.5% BSA and 0.02% sodium azide. |
| Source | Monoclonal, Mouse,IgG |
| Purification | The antibody was affinity-purified from mouse antiserum by affinity-chromatography using epitope-specific immunogen. |
| Dilution | WB 1:500-1:2000 |
| Concentration | 1 mg/ml |
| Purity | ≥90% |
| Storage Stability | -20°C/1 year |
| Synonyms | DVL3; KIAA0208; Segment polarity protein dishevelled homolog DVL-3; Dishevelled-3; DSH homolog 3 |
| Observed Band | |
| Cell Pathway | Cytoplasm . |
| Tissue Specificity | Bone marrow,Brain,Hippocampus,Placenta,Uterus, |
| Function | function:May play a role in the signal transduction pathway mediated by multiple Wnt genes.,similarity:Belongs to the DSH family.,similarity:Contains 1 DEP domain.,similarity:Contains 1 DIX domain.,similarity:Contains 1 PDZ (DHR) domain.,subunit:Interacts (via the PDZ domain) with the C-terminal regions of VANGL1 and VANGL2 (By similarity). Interacts (via the region containing both the PDZ and DEP domains) with LRRFIP2; the DIX domain may inhibit this interaction., |
| Background | This gene is a member of a multi-gene family which shares strong similarity with the Drosophila dishevelled gene, dsh. The Drosophila dishevelled gene encodes a cytoplasmic phosphoprotein that regulates cell proliferation. [provided by RefSeq, Jul 2008], |



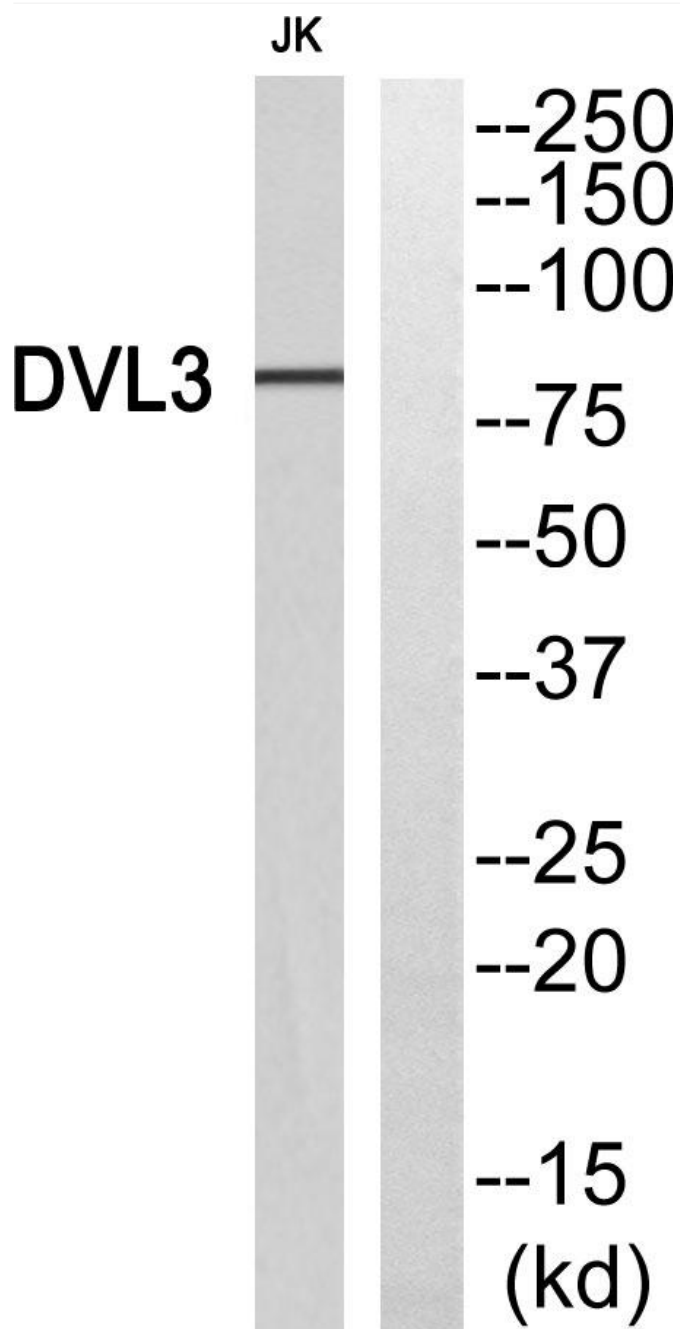
matters needing attention

Avoid repeated freezing and thawing!

Usage suggestions

This product can be used in immunological reaction related experiments. For more information, please consult technical personnel.

Products Images



Western Blot analysis of various cells using Dvl-3 Monoclonal Antibody