

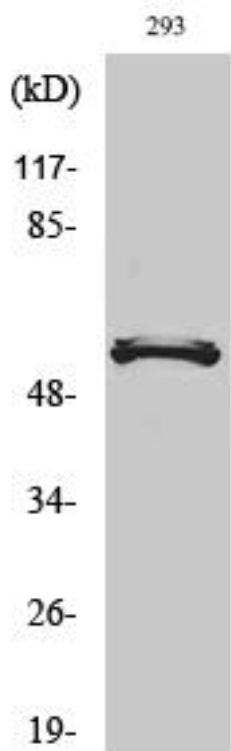


# DACA-1 Monoclonal Antibody

<b>Catalog No</b>	YP-mAb-03811
<b>Isotype</b>	IgG
<b>Reactivity</b>	Human;Mouse;Rat
<b>Applications</b>	WB
<b>Gene Name</b>	YTHDF1
<b>Protein Name</b>	YTH domain family protein 1
<b>Immunogen</b>	The antiserum was produced against synthesized peptide derived from human YTHDF1. AA range:1-50
<b>Specificity</b>	DACA-1 Monoclonal Antibody detects endogenous levels of DACA-1 protein.
<b>Formulation</b>	Liquid in PBS containing 50% glycerol, 0.5% BSA and 0.02% sodium azide.
<b>Source</b>	Monoclonal, Mouse,IgG
<b>Purification</b>	The antibody was affinity-purified from mouse antiserum by affinity-chromatography using epitope-specific immunogen.
<b>Dilution</b>	WB 1:500-1:2000
<b>Concentration</b>	1 mg/ml
<b>Purity</b>	≥90%
<b>Storage Stability</b>	-20°C/1 year
<b>Synonyms</b>	YTHDF1; C20orf21; YTH domain family protein 1; Dermatomyositis associated with cancer putative autoantigen 1; DACA-1
<b>Observed Band</b>	61kD
<b>Cell Pathway</b>	Cytoplasm . Cytoplasm, P-body . Cytoplasm, Stress granule .
<b>Tissue Specificity</b>	Cervix carcinoma,Colon,Ileal mucosa,Lymph,Melanoma,Placenta
<b>Function</b>	similarity:Contains 1 YTH domain.,
<b>Background</b>	similarity:Contains 1 YTH domain.,
<b>matters needing attention</b>	Avoid repeated freezing and thawing!
<b>Usage suggestions</b>	This product can be used in immunological reaction related experiments. For more information, please consult technical personnel.



## Products Images



Western Blot analysis of various cells using DACA-1 Monoclonal Antibody