

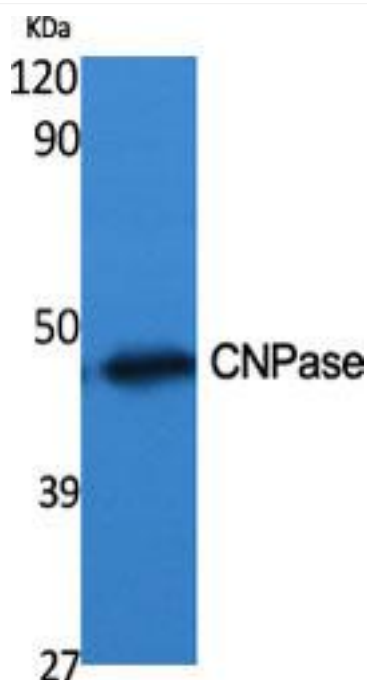


CNPase Monoclonal Antibody

Catalog No	YP-mAb-03780
Isotype	IgG
Reactivity	Human;Mouse;Rat
Applications	WB
Gene Name	CNP
Protein Name	2',3'-cyclic-nucleotide 3'-phosphodiesterase
Immunogen	The antiserum was produced against synthesized peptide derived from human CNPase. AA range:59-108
Specificity	CNPase Monoclonal Antibody detects endogenous levels of CNPase protein.
Formulation	Liquid in PBS containing 50% glycerol, 0.5% BSA and 0.02% sodium azide.
Source	Monoclonal, Mouse,IgG
Purification	The antibody was affinity-purified from mouse antiserum by affinity-chromatography using epitope-specific immunogen.
Dilution	WB 1:500-1:2000
Concentration	1 mg/ml
Purity	≥90%
Storage Stability	-20°C/1 year
Synonyms	CNP; 2'; 3'-cyclic-nucleotide 3'-phosphodiesterase; CNP; CNPase
Observed Band	47kD
Cell Pathway	Membrane ; Lipid-anchor . Melanosome . Firmly bound to membrane structures of brain white matter. .
Tissue Specificity	Brain,Skin,
Function	catalytic activity:Nucleoside 2',3'-cyclic phosphate + H(2)O = nucleoside 2'-phosphate.,similarity:Belongs to the cyclic nucleotide phosphodiesterase family.,subcellular location:Firmly bound to membrane structures of brain white matter. Identified by mass spectrometry in melanosome fractions from stage I to stage IV.,
Background	catalytic activity:Nucleoside 2',3'-cyclic phosphate + H(2)O = nucleoside 2'-phosphate.,similarity:Belongs to the cyclic nucleotide phosphodiesterase family.,subcellular location:Firmly bound to membrane structures of brain white matter. Identified by mass spectrometry in melanosome fractions from stage I to stage IV.,
matters needing attention	Avoid repeated freezing and thawing!

**Usage suggestions**

This product can be used in immunological reaction related experiments. For more information, please consult technical personnel.

Products Images

Western Blot analysis of various cells using CNPase Monoclonal Antibody