



# CHST13 Monoclonal Antibody

<b>Catalog No</b>	YP-mAb-03771
<b>Isotype</b>	IgG
<b>Reactivity</b>	Human;Rat;Mouse;
<b>Applications</b>	WB
<b>Gene Name</b>	CHST13
<b>Protein Name</b>	Carbohydrate sulfotransferase 13
<b>Immunogen</b>	The antiserum was produced against synthesized peptide derived from human CHST13. AA range:211-260
<b>Specificity</b>	CHST13 Monoclonal Antibody detects endogenous levels of CHST13 protein.
<b>Formulation</b>	Liquid in PBS containing 50% glycerol, 0.5% BSA and 0.02% sodium azide.
<b>Source</b>	Monoclonal, Mouse,IgG
<b>Purification</b>	The antibody was affinity-purified from mouse antiserum by affinity-chromatography using epitope-specific immunogen.
<b>Dilution</b>	WB 1:500-1:2000
<b>Concentration</b>	1 mg/ml
<b>Purity</b>	≥90%
<b>Storage Stability</b>	-20°C/1 year
<b>Synonyms</b>	CHST13; Carbohydrate sulfotransferase 13; Chondroitin 4-O-sulfotransferase 3; Chondroitin 4-sulfotransferase 3; C4ST-3; C4ST3
<b>Observed Band</b>	39kD
<b>Cell Pathway</b>	Golgi apparatus membrane ; Single-pass type II membrane protein .
<b>Tissue Specificity</b>	Highly expressed in adult liver. Expressed at lower level in kidney, lymph nodes and fetal kidney.
<b>Function</b>	catalytic activity:3'-phosphoadenylyl sulfate + chondroitin = adenosine 3',5'-bisphosphate + chondroitin 4'-sulfate.,function:Catalyzes the transfer of sulfate to position 4 of the N-acetylgalactosamine (GalNAc) residue of chondroitin. Chondroitin sulfate constitutes the predominant proteoglycan present in cartilage and is distributed on the surfaces of many cells and extracellular matrices. Transfers sulfate to the C4 hydroxyl of beta1,4-linked GalNAc that is substituted with a beta-linked glucuronic acid at the C-3 hydroxyl. No activity toward dermatan.,similarity:Belongs to the sulfotransferase 2 family.,tissue specificity:Highly expressed in adult liver. Expressed at lower level in kidney, lymph nodes and fetal kidney.,
<b>Background</b>	The protein encoded by this gene belongs to the sulfotransferase 2 family. It is localized to the golgi membrane, and catalyzes the transfer of sulfate to the C4 hydroxyl of beta-1,4-linked N-acetylgalactosamine (GalNAc) flanked by glucuronic



acid residue in chondroitin. Chondroitin sulfate constitutes the predominant proteoglycan present in cartilage and is distributed on the surfaces of many cells and extracellular matrices. [provided by RefSeq, Aug 2011],

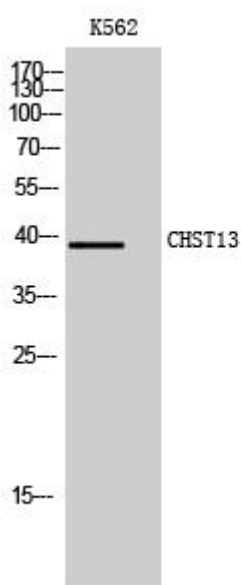
**matters needing attention**

Avoid repeated freezing and thawing!

**Usage suggestions**

This product can be used in immunological reaction related experiments. For more information, please consult technical personnel.

## Products Images



Western Blot analysis of various cells using CHST13 Monoclonal Antibody