

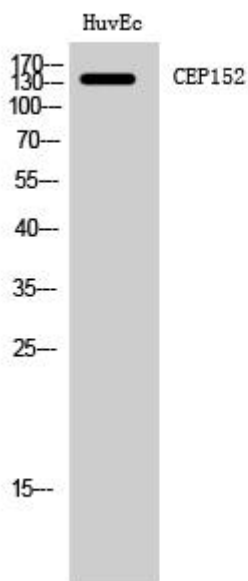


# CEP152 Monoclonal Antibody

<b>Catalog No</b>	YP-mAb-03757
<b>Isotype</b>	IgG
<b>Reactivity</b>	Human;Mouse
<b>Applications</b>	WB
<b>Gene Name</b>	CEP152
<b>Protein Name</b>	Centrosomal protein of 152 kDa
<b>Immunogen</b>	The antiserum was produced against synthesized peptide derived from human CEP152. AA range:841-890
<b>Specificity</b>	CEP152 Monoclonal Antibody detects endogenous levels of CEP152 protein.
<b>Formulation</b>	Liquid in PBS containing 50% glycerol, 0.5% BSA and 0.02% sodium azide.
<b>Source</b>	Monoclonal, Mouse,IgG
<b>Purification</b>	The antibody was affinity-purified from mouse antiserum by affinity-chromatography using epitope-specific immunogen.
<b>Dilution</b>	WB 1:500-1:2000
<b>Concentration</b>	1 mg/ml
<b>Purity</b>	≥90%
<b>Storage Stability</b>	-20°C/1 year
<b>Synonyms</b>	CEP152; KIAA0912; Centrosomal protein of 152 kDa; Cep152
<b>Observed Band</b>	140kD
<b>Cell Pathway</b>	Cytoplasm, cytoskeleton, microtubule organizing center, centrosome . Cytoplasm, cytoskeleton, microtubule organizing center, centrosome, centriole . Colocalizes with CDK5RAP2, WDR62 and CEP63 in a discrete ring around the proximal end of the parental centriole. At this site, a cohesive structure is predicted to engage parental centrioles and procentrioles (PubMed:21983783, PubMed:26297806). Localizes to the deuterosome (By similarity). Localizes to pericentriolar material (PCM) (PubMed:26337392). .
<b>Tissue Specificity</b>	Bladder,Brain,Heart,Lung,Testis,
<b>Function</b>	sequence caution:Contaminating sequence. Potential poly-A sequence.,
<b>Background</b>	centrosomal protein 152(CEP152) Homo sapiens This gene encodes a protein that is thought to be involved with centrosome function. Mutations in this gene have been associated with primary microcephaly (MCPH4). Alternative splicing results in multiple transcript variants. [provided by RefSeq, Aug 2010],
<b>matters needing attention</b>	Avoid repeated freezing and thawing!

**Usage suggestions**

This product can be used in immunological reaction related experiments. For more information, please consult technical personnel.

**Products Images**

Western Blot analysis of various cells using CEP152 Monoclonal Antibody