

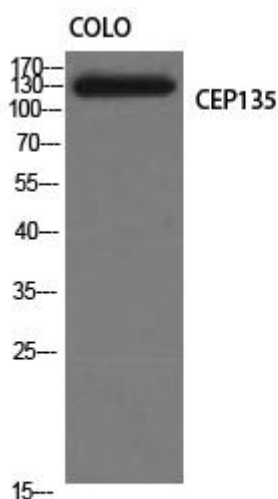


CEP135 Monoclonal Antibody

Catalog No	YP-mAb-03756
Isotype	IgG
Reactivity	Human;Mouse
Applications	WB
Gene Name	CEP135
Protein Name	Centrosomal protein of 135 kDa
Immunogen	The antiserum was produced against synthesized peptide derived from human CEP135. AA range:1081-1130
Specificity	CEP135 Monoclonal Antibody detects endogenous levels of CEP135 protein.
Formulation	Liquid in PBS containing 50% glycerol, 0.5% BSA and 0.02% sodium azide.
Source	Monoclonal, Mouse,IgG
Purification	The antibody was affinity-purified from mouse antiserum by affinity-chromatography using epitope-specific immunogen.
Dilution	WB 1:500-1:2000
Concentration	1 mg/ml
Purity	≥90%
Storage Stability	-20°C/1 year
Synonyms	CEP135; CEP4; KIAA0635; Centrosomal protein of 135 kDa; Cep135; Centrosomal protein 4
Observed Band	134kD
Cell Pathway	Cytoplasm, cytoskeleton, microtubule organizing center, centrosome, centriole . During centriole biogenesis, it is concentrated within the proximal lumen of both parental centrioles and procentrioles.
Tissue Specificity	Brain,Epithelium,Placenta,
Function	similarity:Belongs to the CEP135/TSGA10 family.,
Background	centrosomal protein 135(CEP135) Homo sapiens This gene encodes a centrosomal protein, which acts as a scaffolding protein during early centriole biogenesis, and is also required for centriole-centriole cohesion during interphase. Mutations in this gene are associated with autosomal recessive primary microcephaly-8. [provided by RefSeq, Jun 2012],
matters needing attention	Avoid repeated freezing and thawing!

**Usage suggestions**

This product can be used in immunological reaction related experiments. For more information, please consult technical personnel.

Products Images

Western Blot analysis of various cells using CEP135 Monoclonal Antibody