



# BCAR3 Monoclonal Antibody

<b>Catalog No</b>	YP-mAb-03740
<b>Isotype</b>	IgG
<b>Reactivity</b>	Human;Rat;Mouse;
<b>Applications</b>	WB
<b>Gene Name</b>	BCAR3
<b>Protein Name</b>	Breast cancer anti-estrogen resistance protein 3
<b>Immunogen</b>	The antiserum was produced against synthesized peptide derived from human BCAR3. AA range:761-810
<b>Specificity</b>	BCAR3 Monoclonal Antibody detects endogenous levels of BCAR3 protein.
<b>Formulation</b>	Liquid in PBS containing 50% glycerol, 0.5% BSA and 0.02% sodium azide.
<b>Source</b>	Monoclonal, Mouse,IgG
<b>Purification</b>	The antibody was affinity-purified from mouse antiserum by affinity-chromatography using epitope-specific immunogen.
<b>Dilution</b>	WB 1:500-1:2000
<b>Concentration</b>	1 mg/ml
<b>Purity</b>	≥90%
<b>Storage Stability</b>	-20°C/1 year
<b>Synonyms</b>	BCAR3; NSP2; SH2D3B; Breast cancer anti-estrogen resistance protein 3; Novel SH2-containing protein 2; SH2 domain-containing protein 3B
<b>Observed Band</b>	92kD
<b>Cell Pathway</b>	Cytoplasm . Cell junction, focal adhesion . Localization to focal adhesions depends on interaction with PTPRA. .
<b>Tissue Specificity</b>	Ubiquitously expressed. Found in several cancer cell lines, but not in nonmalignant breast tissue.
<b>Function</b>	function:May act as an adapter protein and couple activated growth factor receptors to a signaling pathway that regulates the proliferation in breast cancer cells. When overexpressed, it confers anti-estrogen resistance in breast cancer cell lines. May also be regulated by cellular adhesion to extracellular matrix proteins.,PTM:Phosphorylated on tyrosine.,similarity:Contains 1 Ras-GEF domain.,similarity:Contains 1 SH2 domain.,subunit:Interacts with BCAR1, NEDD9, PTK2 and PTPN1.,tissue specificity:Ubiquitously expressed. Found in several cancer cell lines, but not in nonmalignant breast tissue.,
<b>Background</b>	breast cancer anti-estrogen resistance 3(BCAR3) Homo sapiens Breast tumors are initially dependent on estrogens for growth and progression and can be inhibited by anti-estrogens such as tamoxifen. However, breast cancers progress to become anti-estrogen resistant. Breast cancer anti-estrogen resistance gene 3 was identified in the search for genes involved in the



development of estrogen resistance. The gene encodes a component of intracellular signal transduction that causes estrogen-independent proliferation in human breast cancer cells. The protein contains a putative src homology 2 (SH2) domain, a hall mark of cellular tyrosine kinase signaling molecules, and is partly homologous to the cell division cycle protein CDC48. Multiple transcript variants encoding different isoforms have been found for this gene. [provided by RefSeq, May 2012],

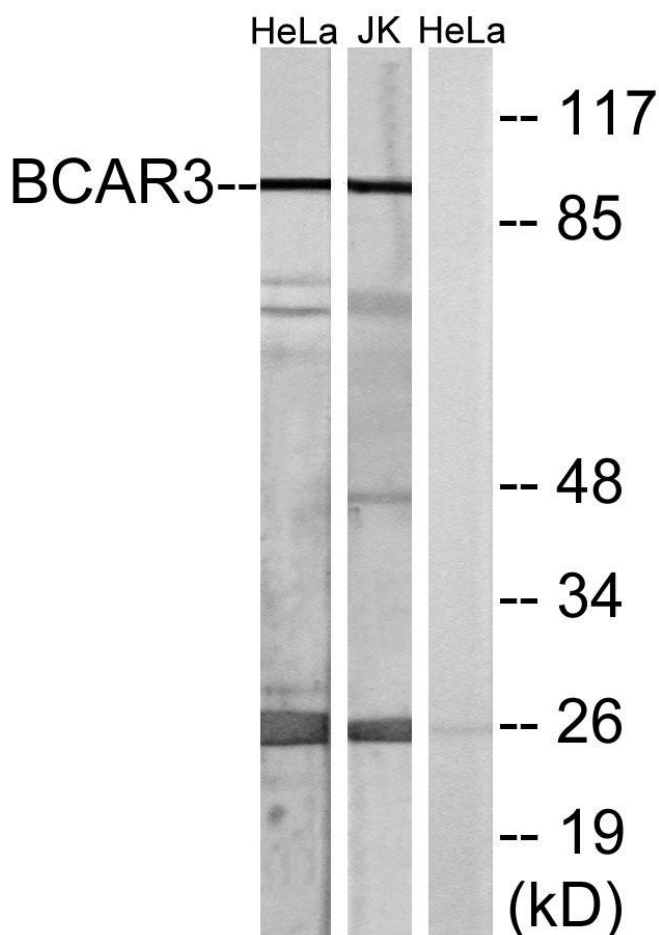
**matters needing attention**

Avoid repeated freezing and thawing!

**Usage suggestions**

This product can be used in immunological reaction related experiments. For more information, please consult technical personnel.

**Products Images**



Western Blot analysis of various cells using BCAR3 Monoclonal Antibody