



# Arylsulfatase G Monoclonal Antibody

Catalog No	YP-mAb-03729
Isotype	IgG
Reactivity	Human;Mouse;Rat
Applications	WB
Gene Name	ARSG
Protein Name	Arylsulfatase G
Immunogen	The antiserum was produced against synthesized peptide derived from human ARSG. AA range:251-300
Specificity	Arylsulfatase G Monoclonal Antibody detects endogenous levels of Arylsulfatase G protein.
Formulation	Liquid in PBS containing 50% glycerol, 0.5% BSA and 0.02% sodium azide.
Source	Monoclonal, Mouse,IgG
Purification	The antibody was affinity-purified from mouse antiserum by affinity-chromatography using epitope-specific immunogen.
Dilution	WB 1:500-1:2000
Concentration	1 mg/ml
Purity	≥90%
Storage Stability	-20°C/1 year
Synonyms	ARSG; KIAA1001; Arylsulfatase G; ASG
Observed Band	65kD
Cell Pathway	Lysosome . The 63-kDa precursor protein localizes to pre-lysosomal compartments and tightly associates with organelle membranes, most likely the endoplasmic reticulum. In contrast, proteolytically processed fragments of 34-, 18- and 10-kDa are found in lysosomal fractions and lose their membrane association. .
Tissue Specificity	Widely expressed, with very low expression in brain, lung, heart and skeletal muscle.
Function	cofactor: Binds 1 calcium ion per subunit.,PTM:N-glycosylated.,PTM:The conversion to 3-oxoalanine (also known as C-formylglycine, FGly), of a serine or cysteine residue in prokaryotes and of a cysteine residue in eukaryotes, is critical for catalytic activity.,similarity:Belongs to the sulfatase family.,tissue specificity:Widely expressed.,
Background	The protein encoded by this gene belongs to the sulfatase enzyme family. Sulfatases hydrolyze sulfate esters from sulfated steroids, carbohydrates, proteoglycans, and glycolipids. They are involved in hormone biosynthesis, modulation of cell signaling, and degradation of macromolecules. This protein displays arylsulfatase activity at acidic pH, as is typical of lysosomal sulfatases, and has been shown to localize in the lysosomes. Alternatively spliced transcript



variants have been found for this gene. [provided by RefSeq, Jun 2012],

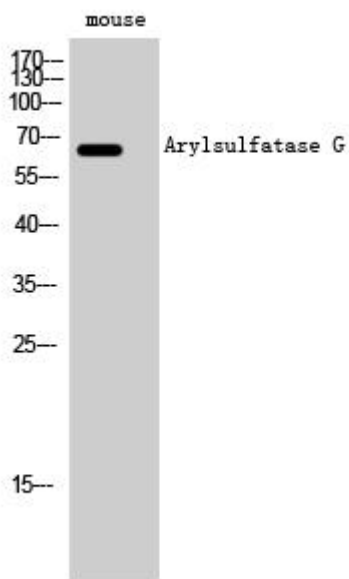
**matters needing attention**

Avoid repeated freezing and thawing!

**Usage suggestions**

This product can be used in immunological reaction related experiments. For more information, please consult technical personnel.

## Products Images



Western Blot analysis of various cells using  
Arylsulfatase G Monoclonal Antibody