

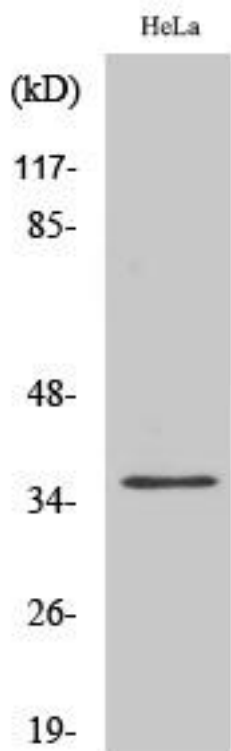


# Annexin X Monoclonal Antibody

<b>Catalog No</b>	YP-mAb-03705
<b>Isotype</b>	IgG
<b>Reactivity</b>	Human;Mouse
<b>Applications</b>	WB
<b>Gene Name</b>	ANXA10
<b>Protein Name</b>	Annexin A10
<b>Immunogen</b>	The antiserum was produced against synthesized peptide derived from human ANXA10. AA range:261-310
<b>Specificity</b>	Annexin X Monoclonal Antibody detects endogenous levels of Annexin X protein.
<b>Formulation</b>	Liquid in PBS containing 50% glycerol, 0.5% BSA and 0.02% sodium azide.
<b>Source</b>	Monoclonal, Mouse,IgG
<b>Purification</b>	The antibody was affinity-purified from mouse antiserum by affinity-chromatography using epitope-specific immunogen.
<b>Dilution</b>	WB 1:500-1:2000
<b>Concentration</b>	1 mg/ml
<b>Purity</b>	≥90%
<b>Storage Stability</b>	-20°C/1 year
<b>Synonyms</b>	ANXA10; ANX14; Annexin A10; Annexin-10; Annexin-14
<b>Observed Band</b>	38kD
<b>Cell Pathway</b>	mitochondrion,
<b>Tissue Specificity</b>	Colon,Lung,
<b>Function</b>	similarity:Belongs to the annexin family.,similarity:Contains 4 annexin repeats.,
<b>Background</b>	This gene encodes a member of the annexin family. Members of this calcium-dependent phospholipid-binding protein family play a role in the regulation of cellular growth and in signal transduction pathways. The function of this gene has not yet been determined. [provided by RefSeq, Jul 2008],
<b>matters needing attention</b>	Avoid repeated freezing and thawing!
<b>Usage suggestions</b>	This product can be used in immunological reaction related experiments. For more information, please consult technical personnel.



## Products Images



Western Blot analysis of various cells using Annexin X Monoclonal Antibody