

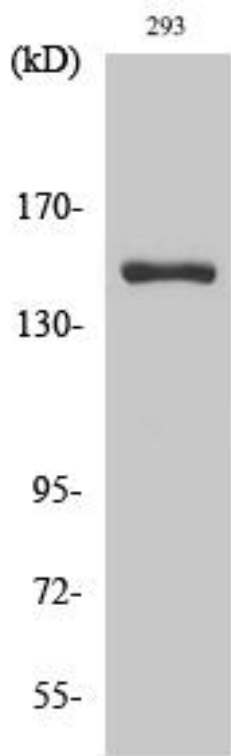


ANKRD30A Monoclonal Antibody

Catalog No	YP-mAb-03700
Isotype	IgG
Reactivity	Human;Rat;Mouse;
Applications	WB
Gene Name	ANKRD30A
Protein Name	Ankyrin repeat domain-containing protein 30A
Immunogen	The antiserum was produced against synthesized peptide derived from human AN30A. AA range:1041-1090
Specificity	ANKRD30A Monoclonal Antibody detects endogenous levels of ANKRD30A protein.
Formulation	Liquid in PBS containing 50% glycerol, 0.5% BSA and 0.02% sodium azide.
Source	Monoclonal, Mouse,IgG
Purification	The antibody was affinity-purified from mouse antiserum by affinity-chromatography using epitope-specific immunogen.
Dilution	WB 1:500-1:2000
Concentration	1 mg/ml
Purity	≥90%
Storage Stability	-20°C/1 year
Synonyms	ANKRD30A; Ankyrin repeat domain-containing protein 30A; Serologically defined breast cancer antigen NY-BR-1
Observed Band	153kD
Cell Pathway	nucleus,
Tissue Specificity	Mainly expressed in breast and testis. A very faint signal is detected in placenta. Also expressed in many breast cancer cells.
Function	similarity:Contains 6 ANK repeats.,tissue specificity:Mainly expressed in breast and testis. A very faint signal is detected in placenta. Also expressed in many breast cancer cells.,
Background	similarity:Contains 6 ANK repeats.,tissue specificity:Mainly expressed in breast and testis. A very faint signal is detected in placenta. Also expressed in many breast cancer cells.,
matters needing attention	Avoid repeated freezing and thawing!
Usage suggestions	This product can be used in immunological reaction related experiments. For more information, please consult technical personnel.



Products Images



Western Blot analysis of various cells using ANKRD30A Monoclonal Antibody