

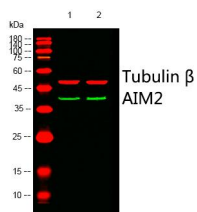


AIM2 Monoclonal Antibody

Catalog No	YP-mAb-03685
Isotype	IgG
Reactivity	Human; Mouse;Rat
Applications	WB
Gene Name	AIM2
Protein Name	Interferon-inducible protein AIM2
Immunogen	The antiserum was produced against synthesized peptide derived from human AIM2. AA range:51-100
Specificity	AIM2 Monoclonal Antibody detects endogenous levels of AIM2 protein.
Formulation	Liquid in PBS containing 50% glycerol, 0.5% BSA and 0.02% sodium azide.
Source	Monoclonal, Mouse,IgG
Purification	The antibody was affinity-purified from mouse antiserum by affinity-chromatography using epitope-specific immunogen.
Dilution	WB 1:500-1:2000
Concentration	1 mg/ml
Purity	≥90%
Storage Stability	-20°C/1 year
Synonyms	AIM2; Interferon-inducible protein AIM2; Absent in melanoma 2
Observed Band	39kD
Cell Pathway	Nucleus. Cytoplasm. Activated inflammasomes can aggregate in the cytosol as speck-like particles.
Tissue Specificity	Expressed in spleen, small intestine, peripheral blood leukocytes, and testis.
Function	disease:Defects in AIM2 may be a cause of microsatellite unstable colon cancers.,function:Tumor suppressor which may act by repressing NF-kappa-B transcriptional activity.,induction:By interferon gamma.,similarity:Belongs to the HIN-200 family.,similarity:Contains 1 DAPIN domain.,similarity:Contains 1 HIN-200 domain.,subunit:Homodimer.,tissue specificity:Expressed in spleen, small intestine, peripheral blood leukocytes, and testis.,
Background	AIM2 is a member of the IFI202X /IFI16 family. It plays a putative role in tumorigenic reversion and may control cell proliferation. Interferon-gamma induces expression of AIM2. [provided by RefSeq, Jul 2008],
matters needing attention	Avoid repeated freezing and thawing!

**Usage suggestions**

This product can be used in immunological reaction related experiments. For more information, please consult technical personnel.

Products Images

Western Blot analysis of various cells using AIM2 Monoclonal Antibody