

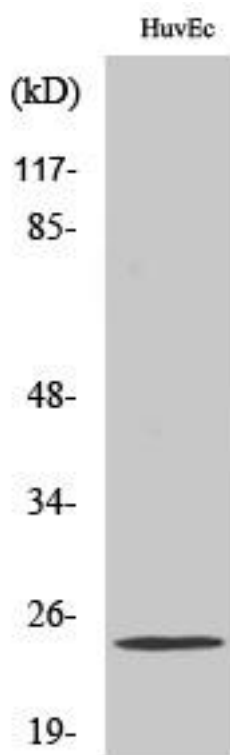


PGRMC2 Monoclonal Antibody

| | |
|----------------------------------|---|
| Catalog No | YP-mAb-03323 |
| Isotype | IgG |
| Reactivity | Human;Mouse;Rat |
| Applications | WB |
| Gene Name | PGRMC2 |
| Protein Name | Membrane-associated progesterone receptor component 2 |
| Immunogen | The antiserum was produced against synthesized peptide derived from human PGRMC2. AA range:174-223 |
| Specificity | PGRMC2 Monoclonal Antibody detects endogenous levels of PGRMC2 protein. |
| Formulation | Liquid in PBS containing 50% glycerol, 0.5% BSA and 0.02% sodium azide. |
| Source | Monoclonal, Mouse,IgG |
| Purification | The antibody was affinity-purified from mouse antiserum by affinity-chromatography using epitope-specific immunogen. |
| Dilution | WB 1:500-1:2000 |
| Concentration | 1 mg/ml |
| Purity | ≥90% |
| Storage Stability | -20°C/1 year |
| Synonyms | PGRMC2; DG6; PMBP; Membrane-associated progesterone receptor component 2; Progesterone membrane-binding protein; Steroid receptor protein DG6 |
| Observed Band | 25kD |
| Cell Pathway | Membrane ; Single-pass membrane protein . Nucleus envelope . Endoplasmic reticulum . |
| Tissue Specificity | Expressed by endometrial glands and stroma (at protein level). |
| Function | domain:The cytochrome b5 heme-binding domain lacks the conserved iron-binding His residues at positions 137 and 161.,function:Receptor for steroids .,similarity:Belongs to the cytochrome b5 family. MAPR subfamily.,similarity:Contains 1 cytochrome b5 heme-binding domain., |
| Background | domain:The cytochrome b5 heme-binding domain lacks the conserved iron-binding His residues at positions 137 and 161.,function:Receptor for steroids .,similarity:Belongs to the cytochrome b5 family. MAPR subfamily.,similarity:Contains 1 cytochrome b5 heme-binding domain., |
| matters needing attention | Avoid repeated freezing and thawing! |

**Usage suggestions**

This product can be used in immunological reaction related experiments. For more information, please consult technical personnel.

Products Images

Western Blot analysis of various cells using PGRMC2 Monoclonal Antibody