

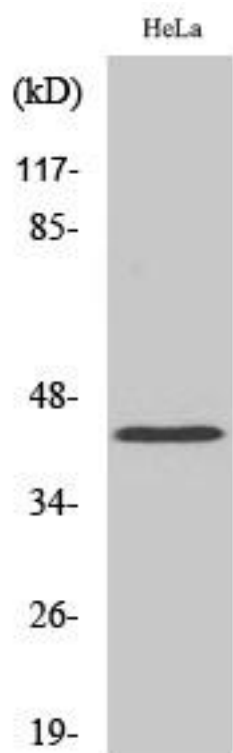


EAR2 Monoclonal Antibody

Catalog No	YP-mAb-03308
Isotype	IgG
Reactivity	Human;Mouse;Rat
Applications	WB
Gene Name	NR2F6
Protein Name	Nuclear receptor subfamily 2 group F member 6
Immunogen	The antiserum was produced against synthesized peptide derived from human NR2F6. AA range:11-60
Specificity	EAR2 Monoclonal Antibody detects endogenous levels of EAR2 protein.
Formulation	Liquid in PBS containing 50% glycerol, 0.5% BSA and 0.02% sodium azide.
Source	Monoclonal, Mouse,IgG
Purification	The antibody was affinity-purified from mouse antiserum by affinity-chromatography using epitope-specific immunogen.
Dilution	WB 1:500-1:2000
Concentration	1 mg/ml
Purity	≥90%
Storage Stability	-20°C/1 year
Synonyms	NR2F6; EAR2; ERBAL2; Nuclear receptor subfamily 2 group F member 6; V-erbA-related protein 2; EAR-2
Observed Band	42kD
Cell Pathway	Nucleus .
Tissue Specificity	Expressed in heart, placenta, liver, skeletal muscle, kidney and pancreas.
Function	similarity:Belongs to the nuclear hormone receptor family. NR2 subfamily.,similarity:Contains 1 nuclear receptor DNA-binding domain.,
Background	similarity:Belongs to the nuclear hormone receptor family. NR2 subfamily.,similarity:Contains 1 nuclear receptor DNA-binding domain.,
matters needing attention	Avoid repeated freezing and thawing!
Usage suggestions	This product can be used in immunological reaction related experiments. For more information, please consult technical personnel.



Products Images



Western Blot analysis of various cells using EAR2 Monoclonal Antibody