



WAVE2 Monoclonal Antibody

Catalog No	YP-mAb-03215
Isotype	IgG
Reactivity	Human;Mouse;Rat
Applications	WB
Gene Name	WASF2
Protein Name	Wiskott-Aldrich syndrome protein family member 2
Immunogen	The antiserum was produced against synthesized peptide derived from human WASF2. AA range:141-190
Specificity	WAVE2 Monoclonal Antibody detects endogenous levels of WAVE2 protein.
Formulation	Liquid in PBS containing 50% glycerol, 0.5% BSA and 0.02% sodium azide.
Source	Monoclonal, Mouse,IgG
Purification	The antibody was affinity-purified from mouse antiserum by affinity-chromatography using epitope-specific immunogen.
Dilution	WB 1:500-1:2000
Concentration	1 mg/ml
Purity	≥90%
Storage Stability	-20°C/1 year
Synonyms	WASF2; WAVE2; Wiskott-Aldrich syndrome protein family member 2; WASP family protein member 2; Protein WAVE-2; Verprolin homology domain-containing protein 2
Observed Band	55kD
Cell Pathway	Cytoplasm, cytoskeleton . Cell projection, lamellipodium . Basolateral cell membrane . At the interface between the lamellipodial actin meshwork and the membrane. .
Tissue Specificity	Expressed in all tissues with strongest expression in placenta, lung, and peripheral blood leukocytes, but not in skeletal muscle.
Function	domain: Binds the Arp2/3 complex through the C-terminal region and actin through verprolin homology (VPH) domain.,function: Downstream effector molecules involved in the transmission of signals from tyrosine kinase receptors and small GTPases to the actin cytoskeleton.,similarity: Belongs to the SCAR/WAVE family.,similarity: Contains 1 WH2 domain.,subcellular location: At the interface between the lamellipodial actin meshwork and the membrane.,subunit: Binds actin and the Arp2/3 complex. Interacts with BAIAP2. Component of the WAVE2 complex composed of ABI1, CYFIP1/SRA1, NCKAP1/NAP1 and WASF2/WAVE2. Directly interacts with C3orf10/HSPC300.,tissue specificity: Expressed in all tissues with strongest expression in placenta, lung, and peripheral blood leukocytes, but not in skeletal muscle.,



Background

This gene encodes a member of the Wiskott-Aldrich syndrome protein family. The gene product is a protein that forms a multiprotein complex that links receptor kinases and actin. Binding to actin occurs through a C-terminal verprolin homology domain in all family members. The multiprotein complex serves to transduce signals that involve changes in cell shape, motility or function. The published map location (PMID:10381382) has been changed based on recent genomic sequence comparisons, which indicate that the expressed gene is located on chromosome 1, and a pseudogene may be located on chromosome X. Two transcript variants encoding different isoforms have been found for this gene. [provided by RefSeq, Jan 2011],

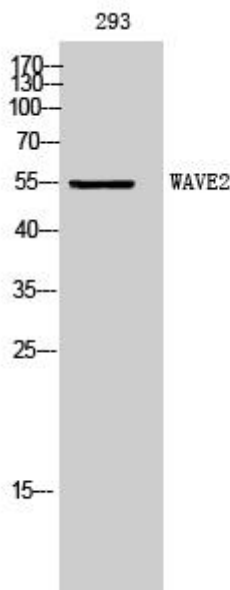
matters needing attention

Avoid repeated freezing and thawing!

Usage suggestions

This product can be used in immunological reaction related experiments. For more information, please consult technical personnel.

Products Images



Western Blot analysis of various cells using WAVE2 Monoclonal Antibody