

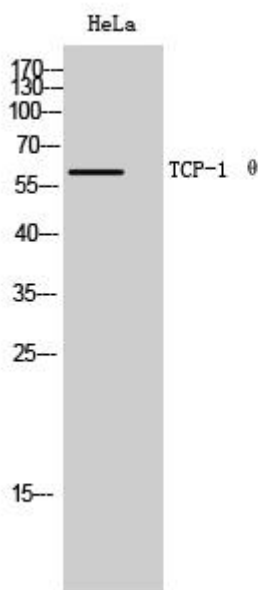


TCP-1 θ Monoclonal Antibody

Catalog No	YP-mAb-03196
Isotype	IgG
Reactivity	Human;Mouse
Applications	WB
Gene Name	CCT8
Protein Name	T-complex protein 1 subunit theta
Immunogen	The antiserum was produced against synthesized peptide derived from human CCT8. AA range:361-410
Specificity	TCP-1 θ Monoclonal Antibody detects endogenous levels of TCP-1 θ protein.
Formulation	Liquid in PBS containing 50% glycerol, 0.5% BSA and 0.02% sodium azide.
Source	Monoclonal, Mouse,IgG
Purification	The antibody was affinity-purified from mouse antiserum by affinity-chromatography using epitope-specific immunogen.
Dilution	WB 1:500-1:2000
Concentration	1 mg/ml
Purity	$\geq 90\%$
Storage Stability	-20°C/1 year
Synonyms	CCT8; C21orf112; CCTQ; KIAA0002; T-complex protein 1 subunit theta; TCP-1-theta; CCT-theta; Renal carcinoma antigen NY-REN-15
Observed Band	60kD
Cell Pathway	Cytoplasm . Cytoplasm, cytoskeleton, microtubule organizing center, centrosome . Cytoplasm, cytoskeleton, cilium basal body .
Tissue Specificity	Adipose tissue,B-cell lymphoma,Bone marrow,Chondrosarcoma,Epitheliu
Function	function:Molecular chaperone; assist the folding of proteins upon ATP hydrolysis. Known to play a role, in vitro, in the folding of actin and tubulin.,similarity:Belongs to the TCP-1 chaperonin family.,subunit:Heterooligomeric complex of about 850 to 900 kDa that forms two stacked rings, 12 to 16 nm in diameter. Interacts with PACRG.,
Background	This gene encodes the theta subunit of the CCT chaperonin, which is abundant in the eukaryotic cytosol and may be involved in the transport and assembly of newly synthesized proteins. Alternative splicing results in multiple transcript variants of this gene. A pseudogene related to this gene is located on chromosome 1. [provided by RefSeq, Sep 2013],
matters needing attention	Avoid repeated freezing and thawing!

**Usage suggestions**

This product can be used in immunological reaction related experiments. For more information, please consult technical personnel.

Products Images

Western Blot analysis of various cells using TCP-1 Monoclonal Antibody