

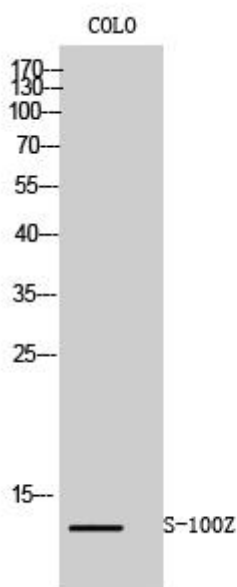


# S-100Z Monoclonal Antibody

<b>Catalog No</b>	YP-mAb-03184
<b>Isotype</b>	IgG
<b>Reactivity</b>	Human;Rat;Mouse;
<b>Applications</b>	WB
<b>Gene Name</b>	S100Z
<b>Protein Name</b>	Protein S100-Z
<b>Immunogen</b>	The antiserum was produced against synthesized peptide derived from human S100Z. AA range:2-51
<b>Specificity</b>	S-100Z Monoclonal Antibody detects endogenous levels of S-100Z protein.
<b>Formulation</b>	Liquid in PBS containing 50% glycerol, 0.5% BSA and 0.02% sodium azide.
<b>Source</b>	Monoclonal, Mouse,IgG
<b>Purification</b>	The antibody was affinity-purified from mouse antiserum by affinity-chromatography using epitope-specific immunogen.
<b>Dilution</b>	WB 1:500-1:2000
<b>Concentration</b>	1 mg/ml
<b>Purity</b>	≥90%
<b>Storage Stability</b>	-20°C/1 year
<b>Synonyms</b>	S100Z; Protein S100-Z; S100 calcium-binding protein Z
<b>Observed Band</b>	12kD
<b>Cell Pathway</b>	
<b>Tissue Specificity</b>	Highest level of expression in spleen and leukocytes.
<b>Function</b>	miscellaneous:This protein binds two calcium ions.,similarity:Belongs to the S-100 family.,similarity:Contains 2 EF-hand domains.,subunit:Homodimer. Interacts with S100P.,tissue specificity:Highest level of expression in spleen and leukocytes.,
<b>Background</b>	Members of the S100 protein family contain 2 calcium-binding EF-hands and exhibit cell-type specific expression patterns. For additional background information on S100 proteins, see MIM 114085.[supplied by OMIM, Mar 2008],
<b>matters needing attention</b>	Avoid repeated freezing and thawing!
<b>Usage suggestions</b>	This product can be used in immunological reaction related experiments. For more information, please consult technical personnel.



## Products Images



Western Blot analysis of various cells using S-100Z Monoclonal Antibody