



# MYLIP Monoclonal Antibody

<b>Catalog No</b>	YP-mAb-03161
<b>Isotype</b>	IgG
<b>Reactivity</b>	Human;Mouse;Rat
<b>Applications</b>	WB
<b>Gene Name</b>	MYLIP
<b>Protein Name</b>	E3 ubiquitin-protein ligase MYLIP
<b>Immunogen</b>	The antiserum was produced against synthesized peptide derived from human MYLIP. AA range:161-210
<b>Specificity</b>	MYLIP Monoclonal Antibody detects endogenous levels of MYLIP protein.
<b>Formulation</b>	Liquid in PBS containing 50% glycerol, 0.5% BSA and 0.02% sodium azide.
<b>Source</b>	Monoclonal, Mouse,IgG
<b>Purification</b>	The antibody was affinity-purified from mouse antiserum by affinity-chromatography using epitope-specific immunogen.
<b>Dilution</b>	WB 1:500-1:2000
<b>Concentration</b>	1 mg/ml
<b>Purity</b>	≥90%
<b>Storage Stability</b>	-20°C/1 year
<b>Synonyms</b>	MYLIP; BZF1; IDOL; BM-023; PP5242; E3 ubiquitin-protein ligase MYLIP; Inducible degrader of the LDL-receptor; Idol; Myosin regulatory light chain interacting protein; MIR
<b>Observed Band</b>	50kD
<b>Cell Pathway</b>	Cytoplasm . Cell membrane ; Peripheral membrane protein .
<b>Tissue Specificity</b>	Ubiquitously expressed.
<b>Function</b>	developmental stage:Expressed in fetal tissues and higher levels were detected in placenta and fetal lung.,domain:The RING domain mediates ubiquitination and the neurite outgrowth inhibitory activity.,function:E3 ubiquitin-protein ligase that mediates ubiquitination and subsequent proteasomal degradation of myosin regulatory light chain (MRLC). Stable or transient overexpression of MIR induces proteasomal degradation of MRLC inhibiting neurite outgrowth in presence of NGF. MIR counteracts the stabilization of MRLC by MIR-interacting saposin-like protein (MSAP/TMEM4) and reduces MSAP-stimulated neurite outgrowth.,pathway:Protein modification; protein ubiquitination.,PTM:Autoubiquitinated.,similarity:Contains 1 FERM domain.,similarity:Contains 1 RING-type zinc finger.,subunit:Interacts with myosin regulatory light chain (MRLC) and TMEM4.,tissue specificity:Ubiquitously expressed.,

**Background**

The ERM protein family members ezrin, radixin, and moesin are cytoskeletal effector proteins linking actin to membrane-bound proteins at the cell surface. Myosin regulatory light chain interacting protein (MYLIP) is a novel ERM-like protein that interacts with myosin regulatory light chain and inhibits neurite outgrowth. [provided by RefSeq, Jul 2008],

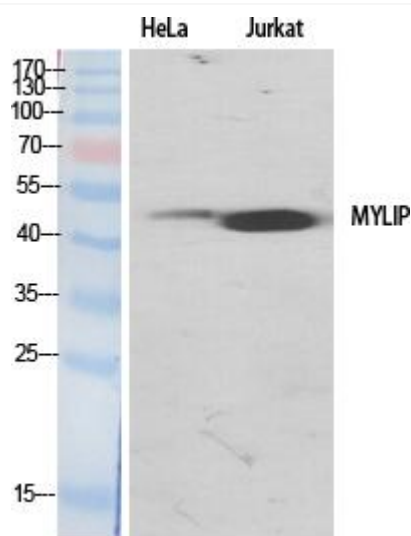
**matters needing attention**

Avoid repeated freezing and thawing!

**Usage suggestions**

This product can be used in immunological reaction related experiments. For more information, please consult technical personnel.

## Products Images



Western Blot analysis of various cells using MYLIP Monoclonal Antibody