



# MAP-2 Monoclonal Antibody

<b>Catalog No</b>	YP-mAb-03147
<b>Isotype</b>	IgG
<b>Reactivity</b>	Human;Mouse;Rat
<b>Applications</b>	WB
<b>Gene Name</b>	MAP2
<b>Protein Name</b>	Microtubule-associated protein 2
<b>Immunogen</b>	The antiserum was produced against synthesized peptide derived from human MAP-2. AA range:14-63
<b>Specificity</b>	MAP-2 Monoclonal Antibody detects endogenous levels of MAP-2 protein.
<b>Formulation</b>	Liquid in PBS containing 50% glycerol, 0.5% BSA and 0.02% sodium azide.
<b>Source</b>	Monoclonal, Mouse,IgG
<b>Purification</b>	The antibody was affinity-purified from mouse antiserum by affinity-chromatography using epitope-specific immunogen.
<b>Dilution</b>	WB 1:500-1:2000
<b>Concentration</b>	1 mg/ml
<b>Purity</b>	≥90%
<b>Storage Stability</b>	-20°C/1 year
<b>Synonyms</b>	MAP2; Microtubule-associated protein 2; MAP-2
<b>Observed Band</b>	280kD
<b>Cell Pathway</b>	Cytoplasm, cytoskeleton . Cell projection, dendrite .
<b>Tissue Specificity</b>	Brain,Brain cortex,Epithelium,Pancreas,Testis,
<b>Function</b>	alternative products:Additional isoforms seem to exist,function:The exact function of MAP2 is unknown but MAPs may stabilize the microtubules against depolymerization. They also seem to have a stiffening effect on microtubules.,PTM:MAP2A/c is phosphorylated. Phosphorylated upon DNA damage, probably by ATM or ATR.,similarity:Contains 3 Tau/MAP repeats.,similarity:Contains 4 Tau/MAP repeats.,
<b>Background</b>	This gene encodes a protein that belongs to the microtubule-associated protein family. The proteins of this family are thought to be involved in microtubule assembly, which is an essential step in neurogenesis. The products of similar genes in rat and mouse are neuron-specific cytoskeletal proteins that are enriched in dendrites, implicating a role in determining and stabilizing dendritic shape during neuron development. A number of alternatively spliced variants encoding distinct isoforms have been described. [provided by RefSeq, Jan 2010],



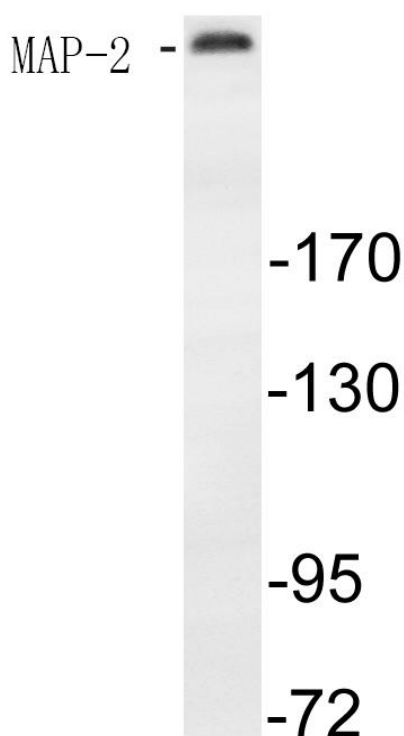
**matters needing attention**

Avoid repeated freezing and thawing!

**Usage suggestions**

This product can be used in immunological reaction related experiments. For more information, please consult technical personnel.

**Products Images**



Western Blot analysis of various cells using MAP-2 Monoclonal Antibody