

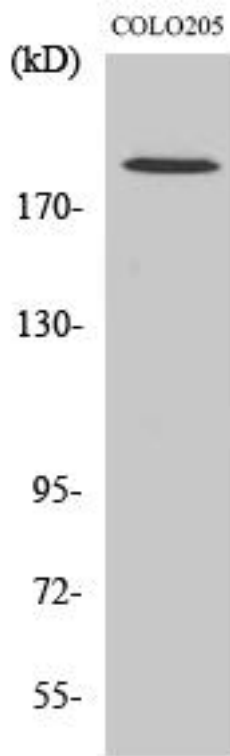


# GCP6 Monoclonal Antibody

<b>Catalog No</b>	YP-mAb-03139
<b>Isotype</b>	IgG
<b>Reactivity</b>	Human;Rat;Mouse;
<b>Applications</b>	WB
<b>Gene Name</b>	TUBGCP6
<b>Protein Name</b>	Gamma-tubulin complex component 6
<b>Immunogen</b>	The antiserum was produced against synthesized peptide derived from human TUBGCP6. AA range:741-790
<b>Specificity</b>	GCP6 Monoclonal Antibody detects endogenous levels of GCP6 protein.
<b>Formulation</b>	Liquid in PBS containing 50% glycerol, 0.5% BSA and 0.02% sodium azide.
<b>Source</b>	Monoclonal, Mouse,IgG
<b>Purification</b>	The antibody was affinity-purified from mouse antiserum by affinity-chromatography using epitope-specific immunogen.
<b>Dilution</b>	WB 1:500-1:2000
<b>Concentration</b>	1 mg/ml
<b>Purity</b>	≥90%
<b>Storage Stability</b>	-20°C/1 year
<b>Synonyms</b>	TUBGCP6; GCP6; KIAA1669; Gamma-tubulin complex component 6; GCP-6
<b>Observed Band</b>	200kD
<b>Cell Pathway</b>	Cytoplasm, cytoskeleton, microtubule organizing center, centrosome .
<b>Tissue Specificity</b>	Brain,Epithelium,Kidney,PCR rescued clones,
<b>Function</b>	function:Gamma-tubulin complex is necessary for microtubule nucleation at the centrosome.,sequence caution:Intron retention.,similarity:Belongs to the GCP family.,subunit:Gamma-tubulin complex is composed of gamma-tubulin, GCP2, GCP3, GCP4, GCP5 and GCP6.,
<b>Background</b>	The protein encoded by this gene is part of a large multisubunit complex required for microtubule nucleation at the centrosome. [provided by RefSeq, Jul 2008],
<b>matters needing attention</b>	Avoid repeated freezing and thawing!
<b>Usage suggestions</b>	This product can be used in immunological reaction related experiments. For more information, please consult technical personnel.



## Products Images



Western Blot analysis of various cells using GCP6 Monoclonal Antibody