

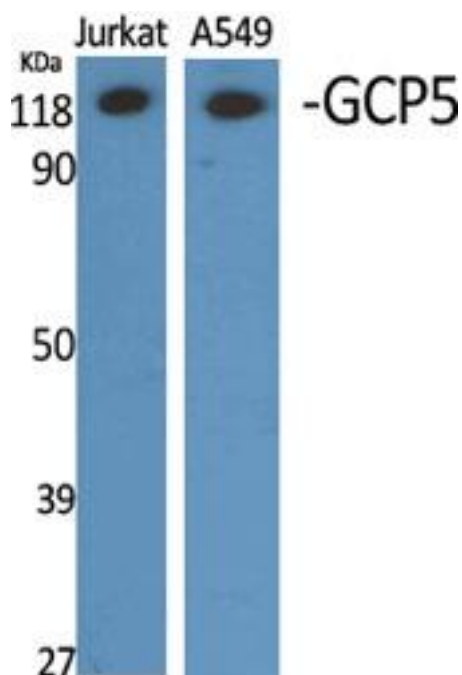


# GCP5 Monoclonal Antibody

<b>Catalog No</b>	YP-mAb-03138
<b>Isotype</b>	IgG
<b>Reactivity</b>	Human;Mouse;Rat
<b>Applications</b>	WB
<b>Gene Name</b>	TUBGCP5
<b>Protein Name</b>	Gamma-tubulin complex component 5
<b>Immunogen</b>	The antiserum was produced against synthesized peptide derived from human TUBGCP5. AA range:741-790
<b>Specificity</b>	GCP5 Monoclonal Antibody detects endogenous levels of GCP5 protein.
<b>Formulation</b>	Liquid in PBS containing 50% glycerol, 0.5% BSA and 0.02% sodium azide.
<b>Source</b>	Monoclonal, Mouse,IgG
<b>Purification</b>	The antibody was affinity-purified from mouse antiserum by affinity-chromatography using epitope-specific immunogen.
<b>Dilution</b>	WB 1:500-1:2000
<b>Concentration</b>	1 mg/ml
<b>Purity</b>	≥90%
<b>Storage Stability</b>	-20°C/1 year
<b>Synonyms</b>	TUBGCP5; GCP5; KIAA1899; Gamma-tubulin complex component 5; GCP-5
<b>Observed Band</b>	118kD
<b>Cell Pathway</b>	Cytoplasm, cytoskeleton, microtubule organizing center, centrosome .
<b>Tissue Specificity</b>	Widely expressed, with highest levels in heart and skeletal muscle and moderate levels in brain.
<b>Function</b>	function:Gamma-tubulin complex is necessary for microtubule nucleation at the centrosome.,similarity:Belongs to the GCP family.,subunit:Gamma-tubulin complex is composed of gamma-tubulin, GCP2, GCP3, GCP4, GCP5 and GCP6.,tissue specificity:Widely expressed, with highest levels in heart and skeletal muscle and moderate levels in brain.,
<b>Background</b>	function:Gamma-tubulin complex is necessary for microtubule nucleation at the centrosome.,similarity:Belongs to the GCP family.,subunit:Gamma-tubulin complex is composed of gamma-tubulin, GCP2, GCP3, GCP4, GCP5 and GCP6.,tissue specificity:Widely expressed, with highest levels in heart and skeletal muscle and moderate levels in brain.,
<b>matters needing attention</b>	Avoid repeated freezing and thawing!

**Usage suggestions**

This product can be used in immunological reaction related experiments. For more information, please consult technical personnel.

**Products Images**

Western Blot analysis of various cells using GCP5 Monoclonal Antibody