



# GCP4 Monoclonal Antibody

<b>Catalog No</b>	YP-mAb-03137
<b>Isotype</b>	IgG
<b>Reactivity</b>	Human;Mouse
<b>Applications</b>	WB
<b>Gene Name</b>	TUBGCP4
<b>Protein Name</b>	Gamma-tubulin complex component 4
<b>Immunogen</b>	The antiserum was produced against synthesized peptide derived from human TUBGCP4. AA range:191-240
<b>Specificity</b>	GCP4 Monoclonal Antibody detects endogenous levels of GCP4 protein.
<b>Formulation</b>	Liquid in PBS containing 50% glycerol, 0.5% BSA and 0.02% sodium azide.
<b>Source</b>	Monoclonal, Mouse,IgG
<b>Purification</b>	The antibody was affinity-purified from mouse antiserum by affinity-chromatography using epitope-specific immunogen.
<b>Dilution</b>	WB 1:500-1:2000
<b>Concentration</b>	1 mg/ml
<b>Purity</b>	≥90%
<b>Storage Stability</b>	-20°C/1 year
<b>Synonyms</b>	TUBGCP4; 76P; GCP4; Gamma-tubulin complex component 4; GCP-4; hGCP4; Gamma-ring complex protein 76 kDa; h76p; hGrip76
<b>Observed Band</b>	76kD
<b>Cell Pathway</b>	Cytoplasm, cytoskeleton, microtubule organizing center, centrosome.
<b>Tissue Specificity</b>	Ubiquitously expressed.
<b>Function</b>	function:Gamma-tubulin complex is necessary for microtubule nucleation at the centrosome.,similarity:Belongs to the GCP family.,subunit:Gamma-tubulin complex is composed of gamma-tubulin, GCP2, GCP3, GCP4, GCP5 and GCP6.,tissue specificity:Ubiquitously expressed.,
<b>Background</b>	This gene encodes a component of the gamma-tubulin ring complex, which is required for microtubule nucleation. In mammalian cells, the protein localizes to centrosomes in association with gamma-tubulin. Crystal structure analysis revealed a structure composed of five helical bundles arranged around conserved hydrophobic cores. An exposed surface area located in the C-terminal domain is essential and sufficient for direct binding to gamma-tubulin. Mutations in this gene that alter microtubule organization are associated with microcephaly and chorioretinopathy. Alternative splicing results in multiple transcript variants. [provided by RefSeq, May 2015],



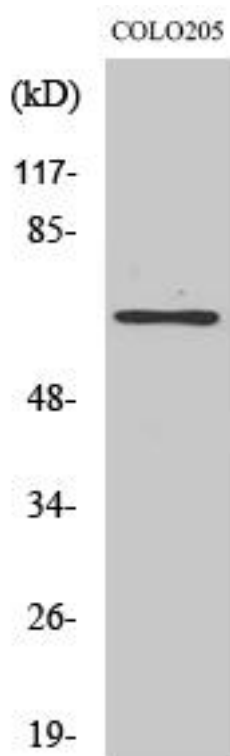
**matters needing attention**

Avoid repeated freezing and thawing!

**Usage suggestions**

This product can be used in immunological reaction related experiments. For more information, please consult technical personnel.

**Products Images**



Western Blot analysis of various cells using GCP4 Monoclonal Antibody