

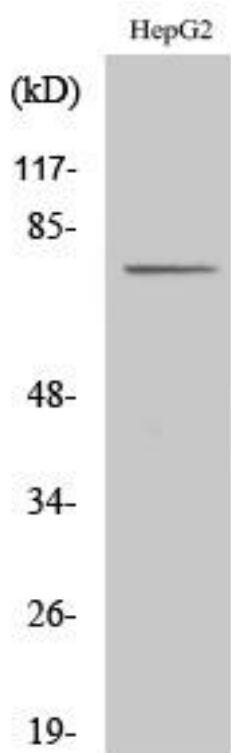


CLIP4 Monoclonal Antibody

Catalog No	YP-mAb-03104
Isotype	IgG
Reactivity	Human;Rat;Mouse;
Applications	WB
Gene Name	CLIP4
Protein Name	CAP-Gly domain-containing linker protein 4
Immunogen	The antiserum was produced against synthesized peptide derived from human CLIP4. AA range:321-370
Specificity	CLIP4 Monoclonal Antibody detects endogenous levels of CLIP4 protein.
Formulation	Liquid in PBS containing 50% glycerol, 0.5% BSA and 0.02% sodium azide.
Source	Monoclonal, Mouse,IgG
Purification	The antibody was affinity-purified from mouse antiserum by affinity-chromatography using epitope-specific immunogen.
Dilution	WB 1:500-1:2000
Concentration	1 mg/ml
Purity	≥90%
Storage Stability	-20°C/1 year
Synonyms	CLIP4; RSNL2; CAP-Gly domain-containing linker protein 4; Restin-like protein 2
Observed Band	76kD
Cell Pathway	integral component of membrane,
Tissue Specificity	Amygdala,Brain,Lung,Prostate,Testis,
Function	similarity:Contains 3 ANK repeats.,similarity:Contains 3 CAP-Gly domains.,
Background	similarity:Contains 3 ANK repeats.,similarity:Contains 3 CAP-Gly domains.,
matters needing attention	Avoid repeated freezing and thawing!
Usage suggestions	This product can be used in immunological reaction related experiments. For more information, please consult technical personnel.



Products Images



Western Blot analysis of various cells using CLIP4
Monoclonal Antibody