



# CLIP3 Monoclonal Antibody

|                           |  |
|---------------------------|--|
| <b>Catalog No</b>         | YP-mAb-03103   |
| <b>Isotype</b>            | IgG  |
| <b>Reactivity</b>         | Human;Mouse;Rat  |
| <b>Applications</b>       | WB   |
| <b>Gene Name</b>          | CLIP3  |
| <b>Protein Name</b>       | CAP-Gly domain-containing linker protein 3   |
| <b>Immunogen</b>          | The antiserum was produced against synthesized peptide derived from human CLIP3. AA range:361-410  |
| <b>Specificity</b>        | CLIP3 Monoclonal Antibody detects endogenous levels of CLIP3 protein.  |
| <b>Formulation</b>        | Liquid in PBS containing 50% glycerol, 0.5% BSA and 0.02% sodium azide.  |
| <b>Source</b>             | Monoclonal, Mouse,IgG  |
| <b>Purification</b>       | The antibody was affinity-purified from mouse antiserum by affinity-chromatography using epitope-specific immunogen.   |
| <b>Dilution</b>           | WB 1:500-1:2000  |
| <b>Concentration</b>      | 1 mg/ml  |
| <b>Purity</b>             | ≥90%   |
| <b>Storage Stability</b>  | -20°C/1 year   |
| <b>Synonyms</b>           | CLIP3; CLIPR59; CAP-Gly domain-containing linker protein 3; Cytoplasmic linker protein 170-related 59 kDa protein; CLIP-170-related 59 kDa protein; CLIPR-59   |
| <b>Observed Band</b>      | 60kD   |
| <b>Cell Pathway</b>       | Cell membrane ; Lipid-anchor . Cytoplasm . Golgi apparatus, Golgi stack . Localized to Golgi stacks as well as on tubulovesicular elements juxtaposed to Golgi cisternae.  |
| <b>Tissue Specificity</b> | Brain,Skin,Uterus,   |
| <b>Function</b>           | domain:Microtubule association is inhibited by the ANK repeats and the Golgi localization region (GoLD).,function:Functions as a cytoplasmic linker protein. Involved in TGN-endosome dynamics.,miscellaneous:The N-terminal half is dispensable for proper Golgi targeting, whereas the GoLD region is required.,similarity:Contains 2 CAP-Gly domains.,similarity:Contains 3 ANK repeats.,subcellular location:Localized to Golgi stacks as well as on tubulovesicular elements juxtaposed to Golgi cisternae.,subunit:Homodimer., |
| <b>Background</b>         | This gene encodes a member of the cytoplasmic linker protein 170 family. Members of this protein family contain a cytoskeleton-associated protein glycine-rich domain and mediate the interaction of microtubules with cellular organelles. The encoded protein plays a role in T cell apoptosis by facilitating the association of tubulin and the lipid raft ganglioside GD3. The encoded protein also   |



functions as a scaffold protein mediating membrane localization of phosphorylated protein kinase B. Alternatively spliced transcript variants have been observed for this gene. [provided by RefSeq, Dec 2010],

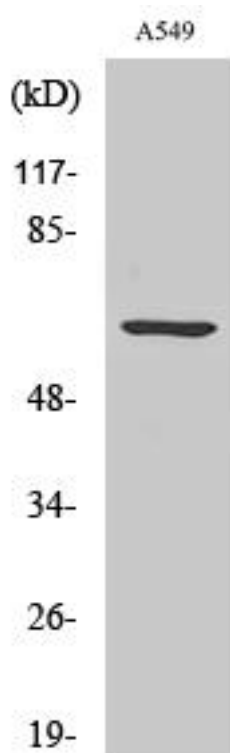
**matters needing attention**

Avoid repeated freezing and thawing!

**Usage suggestions**

This product can be used in immunological reaction related experiments. For more information, please consult technical personnel.

**Products Images**



Western Blot analysis of various cells using CLIP3 Monoclonal Antibody