



# Calponin 2 Monoclonal Antibody

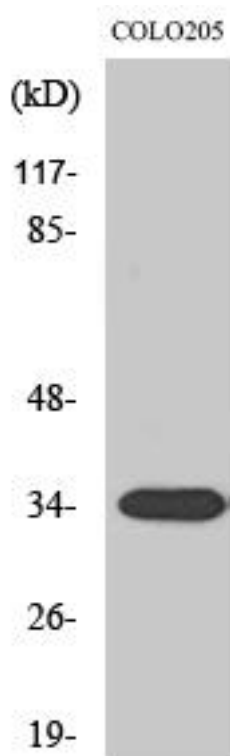
<b>Catalog No</b>	YP-mAb-03095
<b>Isotype</b>	IgG
<b>Reactivity</b>	Human;Mouse
<b>Applications</b>	WB
<b>Gene Name</b>	CNN2
<b>Protein Name</b>	Calponin-2
<b>Immunogen</b>	The antiserum was produced against synthesized peptide derived from human CNN2. AA range:121-170
<b>Specificity</b>	Calponin 2 Monoclonal Antibody detects endogenous levels of Calponin 2 protein.
<b>Formulation</b>	Liquid in PBS containing 50% glycerol, 0.5% BSA and 0.02% sodium azide.
<b>Source</b>	Monoclonal, Mouse,IgG
<b>Purification</b>	The antibody was affinity-purified from mouse antiserum by affinity-chromatography using epitope-specific immunogen.
<b>Dilution</b>	WB 1:500-1:2000
<b>Concentration</b>	1 mg/ml
<b>Purity</b>	≥90%
<b>Storage Stability</b>	-20°C/1 year
<b>Synonyms</b>	CNN2; Calponin-2; Calponin H2; smooth muscle; Neutral calponin
<b>Observed Band</b>	33kD
<b>Cell Pathway</b>	stress fiber,cytoskeleton,cell-cell junction,cell-cell adherens junction,focal adhesion,membrane,extracellular exosome,
<b>Tissue Specificity</b>	Heart and smooth muscle.
<b>Function</b>	function:Thin filament-associated protein that is implicated in the regulation and modulation of smooth muscle contraction. It is caMABLE of binding to actin, calmodulin, troponin C and tropomyosin. The interaction of calponin with actin inhibits the actomyosin Mg-ATPase activity.,similarity:Belongs to the calponin family.,similarity:Contains 1 CH (calponin-homology) domain.,similarity:Contains 3 calponin-like repeats.,tissue specificity:Heart and smooth muscle.,
<b>Background</b>	The protein encoded by this gene, which can bind actin, calmodulin, troponin C, and tropomyosin, may function in the structural organization of actin filaments. The encoded protein could play a role in smooth muscle contraction and cell adhesion. Several pseudogenes of this gene have been identified, and are present on chromosomes 1, 2, 3, 6, 9, 11, 13, 15, 16, 21 and 22. Alternative splicing results in multiple transcript variants encoding different isoforms. [provided by RefSeq, Jan 2015],

**matters needing attention**

Avoid repeated freezing and thawing!

**Usage suggestions**

This product can be used in immunological reaction related experiments. For more information, please consult technical personnel.

**Products Images**

Western Blot analysis of various cells using Calponin 2 Monoclonal Antibody