



# Adducin $\gamma$ Monoclonal Antibody

<b>Catalog No</b>	YP-mAb-03084
<b>Isotype</b>	IgG
<b>Reactivity</b>	Human;Mouse;Rat
<b>Applications</b>	WB
<b>Gene Name</b>	ADD3
<b>Protein Name</b>	Gamma-adducin
<b>Immunogen</b>	The antiserum was produced against synthesized peptide derived from human ADD3. AA range:431-480
<b>Specificity</b>	Adducin $\gamma$ Monoclonal Antibody detects endogenous levels of Adducin $\gamma$ protein.
<b>Formulation</b>	Liquid in PBS containing 50% glycerol, 0.5% BSA and 0.02% sodium azide.
<b>Source</b>	Monoclonal, Mouse,IgG
<b>Purification</b>	The antibody was affinity-purified from mouse antiserum by affinity-chromatography using epitope-specific immunogen.
<b>Dilution</b>	WB 1:500-1:2000
<b>Concentration</b>	1 mg/ml
<b>Purity</b>	$\geq 90\%$
<b>Storage Stability</b>	-20°C/1 year
<b>Synonyms</b>	ADD3; ADDL; Gamma-adducin; Adducin-like protein 70
<b>Observed Band</b>	75kD
<b>Cell Pathway</b>	Cytoplasm, cytoskeleton. Cell membrane; Peripheral membrane protein; Cytoplasmic side.
<b>Tissue Specificity</b>	Isoform 1 is ubiquitously expressed.
<b>Function</b>	alternative products:Additional isoforms seem to exist,domain:Comprised of three regions: a N-terminal protease-resistant globular head region, a short connecting subdomain, and a protease-sensitive tail region.,function:Membrane-cytoskeleton-associated protein that promotes the assembly of the spectrin-actin network. Binds to calmodulin.,PTM:Sumoylated.,similarity:Belongs to the aldolase class II family. Adducin subfamily.,subunit:Heterodimer of an alpha and a gamma subunit.,tissue specificity:Heart only expresses isoform 1.,
<b>Background</b>	adducin 3(ADD3) Homo sapiens Adducins are heteromeric proteins composed of different subunits referred to as adducin alpha, beta and gamma. The three subunits are encoded by distinct genes and belong to a family of membrane skeletal proteins involved in the assembly of spectrin-actin network in erythrocytes and at sites of cell-cell contact in epithelial tissues. While adducins alpha and gamma are ubiquitously expressed, the expression of adducin beta is



restricted to brain and hematopoietic tissues. Adducin, originally purified from human erythrocytes, was found to be a heterodimer of adducins alpha and beta. Polymorphisms resulting in amino acid substitutions in these two subunits have been associated with the regulation of blood pressure in an animal model of hypertension. Heterodimers consisting of alpha and gamma subunits have also been described. Structurally, each subunit is comprised of two distinct domains. The amino-terminal region i

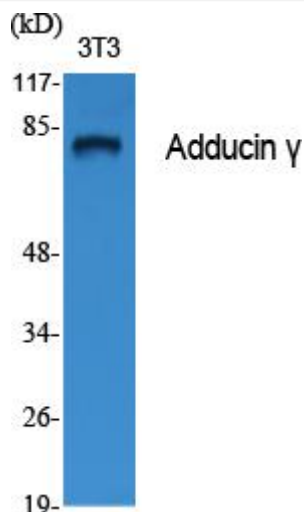
**matters needing attention**

Avoid repeated freezing and thawing!

**Usage suggestions**

This product can be used in immunological reaction related experiments. For more information, please consult technical personnel.

**Products Images**



Western Blot analysis of various cells using Adducin  $\gamma$  Monoclonal Antibody