

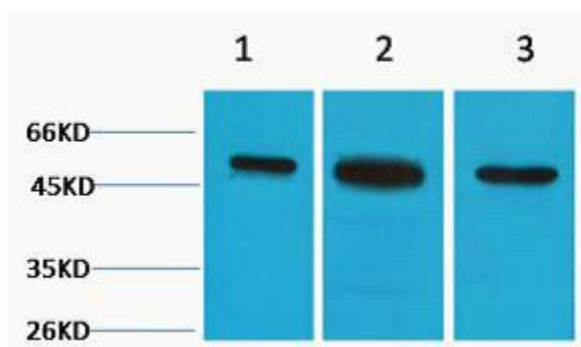


β II Tubulin Monoclonal Antibody

Catalog No	YP-mAb-03003
Isotype	IgG
Reactivity	Human;Mouse;Rat
Applications	WB
Gene Name	TUBB2A
Protein Name	Tubulin beta-2A chain
Immunogen	Synthetic Peptide of β II Tubulin AA range: 80-130
Specificity	The antibody detects endogenous β II tubulin protein.
Formulation	PBS, pH 7.4, containing 0.5%BSA, 0.02% sodium azide as Preservative and 50% Glycerol.
Source	Monoclonal, Mouse,IgG
Purification	The antibody was affinity-purified from mouse antiserum by affinity-chromatography using epitope-specific immunogen.
Dilution	WB 1:500-1:2000
Concentration	1 mg/ml
Purity	$\geq 90\%$
Storage Stability	-20°C /1 year
Synonyms	Tubulin beta-2A chain
Observed Band	50kD
Cell Pathway	Cytoplasm, cytoskeleton .
Tissue Specificity	High expression in brain, where it represents 30% of all beta-tubulins.
Function	function:Tubulin is the major constituent of microtubules. It binds two moles of GTP, one at an exchangeable site on the beta chain and one at a non-exchangeable site on the alpha-chain.,similarity:Belongs to the tubulin family.,subunit:Dimer of alpha and beta chains.,
Background	Microtubules, key participants in processes such as mitosis and intracellular transport, are composed of heterodimers of alpha- and beta-tubulins. The protein encoded by this gene is a beta-tubulin. Defects in this gene are associated with complex cortical dysplasia with other brain malformations-5. Two transcript variants encoding distinct isoforms have been found for this gene. [provided by RefSeq, Jul 2015],
matters needing attention	Avoid repeated freezing and thawing!

**Usage suggestions**

This product can be used in immunological reaction related experiments. For more information, please consult technical personnel.

Products Images

Western Blot analysis of various cells using β II Tubulin Monoclonal Antibody