

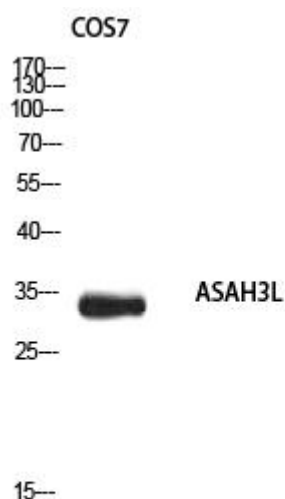


ASAH3L Monoclonal Antibody

Catalog No	YP-mAb-02887
Isotype	IgG
Reactivity	Human;Mouse;Monkey
Applications	WB
Gene Name	ACER2
Protein Name	Alkaline ceramidase 2
Immunogen	Synthesized peptide derived from ASAH3L . at AA range: 50-130
Specificity	ASAH3L Monoclonal Antibody detects endogenous levels of ASAH3L protein.
Formulation	Liquid in PBS containing 50% glycerol, 0.5% BSA and 0.02% sodium azide.
Source	Monoclonal, Mouse,IgG
Purification	The antibody was affinity-purified from mouse antiserum by affinity-chromatography using epitope-specific immunogen.
Dilution	WB 1:500-1:2000
Concentration	1 mg/ml
Purity	≥90%
Storage Stability	-20°C/1 year
Synonyms	ACER2; ASAH3L; PP11646; Alkaline ceramidase 2; AlkCDase 2; Alkaline CDase 2; haCER2; Acylsphingosine deacylase 3-like; N-acylsphingosine amidohydrolase 3-like
Observed Band	33kD
Cell Pathway	Golgi apparatus membrane ; Multi-pass membrane protein .
Tissue Specificity	Highly expressed in placenta.
Function	catalytic activity:N-acylsphingosine + H(2)O = a carboxylate + sphingosine.,function:Hydrolyzes the sphingolipid ceramide into sphingosine and free fatty acid.,similarity:Belongs to the alkaline ceramidase family.,
Background	The sphingolipid metabolite sphingosine-1-phosphate promotes cell proliferation and survival, whereas its precursor, sphingosine, has the opposite effect. The ceramidase ACER2 hydrolyzes very long chain ceramides to generate sphingosine (Xu et al., 2006 [PubMed 16940153]).[supplied by OMIM, Jul 2010],
matters needing attention	Avoid repeated freezing and thawing!

**Usage suggestions**

This product can be used in immunological reaction related experiments. For more information, please consult technical personnel.

Products Images

Western Blot analysis of various cells using ASAH3L Monoclonal Antibody