

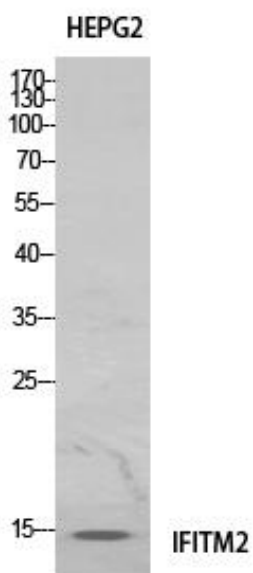


# IFITM2 Monoclonal Antibody

<b>Catalog No</b>	YP-mAb-02878
<b>Isotype</b>	IgG
<b>Reactivity</b>	Human;Rat;Mouse;
<b>Applications</b>	WB
<b>Gene Name</b>	IFITM2
<b>Protein Name</b>	Interferon-induced transmembrane protein 2
<b>Immunogen</b>	The antiserum was produced against synthesized peptide derived from the Internal region of human IFITM2. AA range:1-50
<b>Specificity</b>	IFITM2 Monoclonal Antibody detects endogenous levels of IFITM2 protein.
<b>Formulation</b>	Liquid in PBS containing 50% glycerol, 0.5% BSA and 0.02% sodium azide.
<b>Source</b>	Monoclonal, Mouse,IgG
<b>Purification</b>	The antibody was affinity-purified from mouse antiserum by affinity-chromatography using epitope-specific immunogen.
<b>Dilution</b>	WB 1:500-1:2000
<b>Concentration</b>	1 mg/ml
<b>Purity</b>	≥90%
<b>Storage Stability</b>	-20°C/1 year
<b>Synonyms</b>	IFITM2; Interferon-induced transmembrane protein 2; Dispanin subfamily A member 2c; DSPA2c; Interferon-inducible protein 1-8D
<b>Observed Band</b>	15kD
<b>Cell Pathway</b>	Cell membrane ; Single-pass type II membrane protein . Lysosome membrane ; Single-pass type II membrane protein . Late endosome membrane ; Single-pass type II membrane protein .
<b>Tissue Specificity</b>	Lung,
<b>Function</b>	induction:By alpha and gamma interferons.,similarity:Belongs to the CD225 family.,
<b>Background</b>	induction:By alpha and gamma interferons.,similarity:Belongs to the CD225 family.,
<b>matters needing attention</b>	Avoid repeated freezing and thawing!
<b>Usage suggestions</b>	This product can be used in immunological reaction related experiments. For more information, please consult technical personnel.



## Products Images



Western Blot analysis of various cells using IFITM2 Monoclonal Antibody