

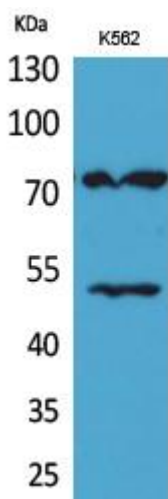


HDC Monoclonal Antibody

Catalog No	YP-mAb-02862
Isotype	IgG
Reactivity	Human;Mouse;Rat
Applications	WB
Gene Name	HDC
Protein Name	Histidine decarboxylase
Immunogen	The antiserum was produced against synthesized peptide derived from the Internal region of human HDC. AA range:201-250
Specificity	HDC Monoclonal Antibody detects endogenous levels of HDC protein.
Formulation	Liquid in PBS containing 50% glycerol, 0.5% BSA and 0.02% sodium azide.
Source	Monoclonal, Mouse,IgG
Purification	The antibody was affinity-purified from mouse antiserum by affinity-chromatography using epitope-specific immunogen.
Dilution	WB 1:500-1:2000
Concentration	1 mg/ml
Purity	≥90%
Storage Stability	-20°C/1 year
Synonyms	HDC; Histidine decarboxylase; HDC
Observed Band	72kD
Cell Pathway	cytosol,
Tissue Specificity	Leukemia,
Function	catalytic activity:L-histidine = histamine + CO(2).,cofactor:Pyridoxal phosphate.,pathway:Amine and polyamine biosynthesis; histamine biosynthesis; histamine from L-histidine: step 1/1.,similarity:Belongs to the group II decarboxylase family.,subunit:Homodimer.,
Background	This gene encodes a member of the group II decarboxylase family and forms a homodimer that converts L-histidine to histamine in a pyridoxal phosphate dependent manner. Histamine regulates several physiologic processes, including neurotransmission, gastric acid secretion,inflammation, and smooth muscle tone.[provided by RefSeq, Aug 2010],
matters needing attention	Avoid repeated freezing and thawing!

**Usage suggestions**

This product can be used in immunological reaction related experiments. For more information, please consult technical personnel.

Products Images

Western Blot analysis of various cells using HDC Monoclonal Antibody