

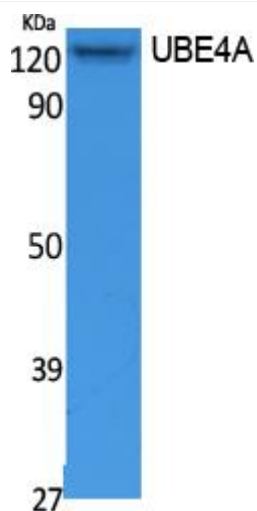


# UBE4A Monoclonal Antibody

<b>Catalog No</b>	YP-mAb-02849
<b>Isotype</b>	IgG
<b>Reactivity</b>	Human;Mouse;Rat
<b>Applications</b>	WB
<b>Gene Name</b>	UBE4A
<b>Protein Name</b>	Ubiquitin conjugation factor E4 A
<b>Immunogen</b>	Synthesized peptide derived from the N-terminal region of human UBE4A.
<b>Specificity</b>	UBE4A Monoclonal Antibody detects endogenous levels of UBE4A protein.
<b>Formulation</b>	Liquid in PBS containing 50% glycerol, 0.5% BSA and 0.02% sodium azide.
<b>Source</b>	Monoclonal, Mouse,IgG
<b>Purification</b>	The antibody was affinity-purified from mouse antiserum by affinity-chromatography using epitope-specific immunogen.
<b>Dilution</b>	WB 1:500-1:2000
<b>Concentration</b>	1 mg/ml
<b>Purity</b>	≥90%
<b>Storage Stability</b>	-20°C/1 year
<b>Synonyms</b>	UBE4A; KIAA0126; Ubiquitin conjugation factor E4 A
<b>Observed Band</b>	122kD
<b>Cell Pathway</b>	Cytoplasm .
<b>Tissue Specificity</b>	Bone marrow,Platelet,Skeletal muscle,
<b>Function</b>	function: Binds to the ubiquitin moieties of preformed conjugates and catalyzes ubiquitin chain assembly in conjunction with E1, E2, and E3.,sequence caution:Contaminating sequence. Potential poly-A sequence.,similarity:Belongs to the ubiquitin conjugation factor E4 family.,similarity:Contains 1 U-box domain.,
<b>Background</b>	This gene encodes a member of the U-box ubiquitin ligase family. The encoded protein is involved in multiubiquitin chain assembly and plays a critical role in chromosome condensation and separation through the polyubiquitination of securin. Autoantibodies against the encoded protein may be markers for scleroderma and Crohn's disease. A pseudogene of this gene is located on the long arm of chromosome 3. Alternatively spliced transcript variants encoding multiple isoforms have been observed for this gene. [provided by RefSeq, Feb 2011],
<b>matters needing attention</b>	Avoid repeated freezing and thawing!

**Usage suggestions**

This product can be used in immunological reaction related experiments. For more information, please consult technical personnel.

**Products Images**

Western Blot analysis of various cells using UBE4A Monoclonal Antibody