



# USP38 Monoclonal Antibody

|                           |  |
|---------------------------|--|
| <b>Catalog No</b>         | YP-mAb-02835   |
| <b>Isotype</b>            | IgG  |
| <b>Reactivity</b>         | Human;Rat;Mouse;   |
| <b>Applications</b>       | WB   |
| <b>Gene Name</b>          | USP38  |
| <b>Protein Name</b>       | Ubiquitin carboxyl-terminal hydrolase 38   |
| <b>Immunogen</b>          | The antiserum was produced against synthesized peptide derived from human USP38. AA range:551-600  |
| <b>Specificity</b>        | USP38 Monoclonal Antibody detects endogenous levels of USP38 protein.  |
| <b>Formulation</b>        | Liquid in PBS containing 50% glycerol, 0.5% BSA and 0.02% sodium azide.  |
| <b>Source</b>             | Monoclonal, Mouse,IgG  |
| <b>Purification</b>       | The antibody was affinity-purified from mouse antiserum by affinity-chromatography using epitope-specific immunogen.   |
| <b>Dilution</b>           | WB 1:500-1:2000  |
| <b>Concentration</b>      | 1 mg/ml  |
| <b>Purity</b>             | ≥90%   |
| <b>Storage Stability</b>  | -20°C/1 year   |
| <b>Synonyms</b>           | USP38; KIAA1891; Ubiquitin carboxyl-terminal hydrolase 38; Deubiquitinating enzyme 38; HP43.8KD; Ubiquitin thioesterase 38; Ubiquitin-specific-processing protease 38  |
| <b>Observed Band</b>      | 120kD  |
| <b>Cell Pathway</b>       |  |
| <b>Tissue Specificity</b> | Highly expressed in skeletal muscle. Expressed in adrenal gland.   |
| <b>Function</b>           | catalytic activity:Ubiquitin C-terminal thioester + H(2)O = ubiquitin + a thiol.,sequence caution:The absence of the residues from Tyr-840 to Ser-871 is not the result of an alternative splicing.,similarity:Belongs to the peptidase C19 family.,tissue specificity:Highly expressed in skeletal muscle. Expressed in adrenal gland., |
| <b>Background</b>         | catalytic activity:Ubiquitin C-terminal thioester + H(2)O = ubiquitin + a thiol.,sequence caution:The absence of the residues from Tyr-840 to Ser-871 is not the result of an alternative splicing.,similarity:Belongs to the peptidase C19 family.,tissue specificity:Highly expressed in skeletal muscle. Expressed in adrenal gland., |



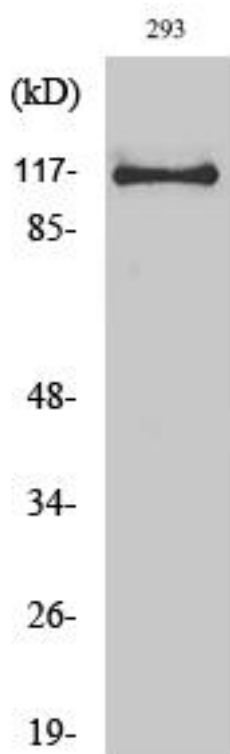
**matters needing attention**

Avoid repeated freezing and thawing!

**Usage suggestions**

This product can be used in immunological reaction related experiments. For more information, please consult technical personnel.

**Products Images**



Western Blot analysis of various cells using USP38 Monoclonal Antibody