

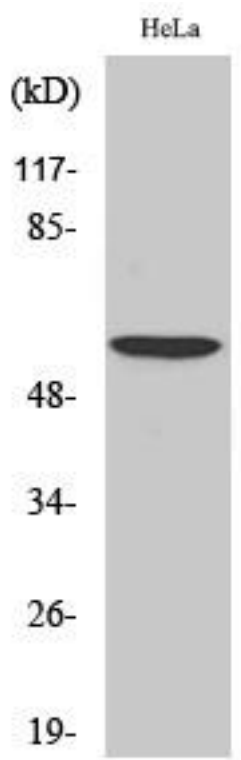


USP30 Monoclonal Antibody

Catalog No	YP-mAb-02832
Isotype	IgG
Reactivity	Human;Mouse;Rat
Applications	WB
Gene Name	USP30
Protein Name	Ubiquitin carboxyl-terminal hydrolase 30
Immunogen	The antiserum was produced against synthesized peptide derived from human USP30. AA range:31-80
Specificity	USP30 Monoclonal Antibody detects endogenous levels of USP30 protein.
Formulation	Liquid in PBS containing 50% glycerol, 0.5% BSA and 0.02% sodium azide.
Source	Monoclonal, Mouse,IgG
Purification	The antibody was affinity-purified from mouse antiserum by affinity-chromatography using epitope-specific immunogen.
Dilution	WB 1:500-1:2000
Concentration	1 mg/ml
Purity	≥90%
Storage Stability	-20°C/1 year
Synonyms	USP30; Ubiquitin carboxyl-terminal hydrolase 30; Deubiquitinating enzyme 30; Ubiquitin thioesterase 30; Ubiquitin-specific-processing protease 30; Ub-specific protease 30
Observed Band	60kd unspecial bands(65kd 105kd 130kd)in Hela and HCT116 cell.
Cell Pathway	Mitochondrion outer membrane .
Tissue Specificity	Expressed in skeletal muscle, pancreas, liver and kidney.
Function	catalytic activity:Ubiquitin C-terminal thioester + H(2)O = ubiquitin + a thiol.;function:May participate in the maintenance of mitochondrial morphology.;similarity:Belongs to the peptidase C19 family.;tissue specificity:Expressed in skeletal muscle, pancreas, liver and kidney.,
Background	USP30, a member of the ubiquitin-specific protease family (see USP1, MIM 603478), is a novel mitochondrial deubiquitinating (DUB) enzyme (Nakamura and Hirose, 2008 [PubMed 18287522]).[supplied by OMIM, Dec 2008],
matters needing attention	Avoid repeated freezing and thawing!

**Usage suggestions**

This product can be used in immunological reaction related experiments. For more information, please consult technical personnel.

Products Images

Western Blot analysis of various cells using USP30 Monoclonal Antibody