



# USP16 Monoclonal Antibody

Catalog No	YP-mAb-02829
Isotype	IgG
Reactivity	Human;Mouse;Rat
Applications	WB
Gene Name	USP16
Protein Name	Ubiquitin carboxyl-terminal hydrolase 16
Immunogen	Synthesized peptide derived from the Internal region of human USP16.
Specificity	USP16 Monoclonal Antibody detects endogenous levels of USP16 protein.
Formulation	Liquid in PBS containing 50% glycerol, 0.5% BSA and 0.02% sodium azide.
Source	Monoclonal, Mouse,IgG
Purification	The antibody was affinity-purified from mouse antiserum by affinity-chromatography using epitope-specific immunogen.
Dilution	WB 1:500-1:2000
Concentration	1 mg/ml
Purity	≥90%
Storage Stability	-20°C/1 year
Synonyms	USP16; MSTP039; Ubiquitin carboxyl-terminal hydrolase 16; Deubiquitinating enzyme 16; Ubiquitin thioesterase 16; Ubiquitin-processing protease UBP-M; Ubiquitin-specific-processing protease 16
Observed Band	93kD
Cell Pathway	Nucleus .
Tissue Specificity	Present in all the tissues examined including fetal brain, lung, liver, kidney, and adult heart, brain, placenta, lung, liver, skeletal muscle, kidney and pancreas.
Function	catalytic activity:Ubiquitin C-terminal thioester + H(2)O = ubiquitin + a thiol.,disease:A chromosomal aberration involving USP16 is a cause of Chronic myelomonocytic leukemia. Inversion inv(21) (q21;q22) with RUNX1/AML1.,domain:The UBP-type zinc finger binds 3 zinc ions that form a pair of cross-braced ring fingers encapsulated within a third zinc finger in the primary structure. It recognizes the C-terminal tail of free ubiquitin.,function:Specifically deubiquitinates histone H2A, a specific tag for epigenetic transcriptional repression, thereby acting as a coactivator. Deubiquitination of histone H2A is a prerequisite for subsequent phosphorylation at 'Ser-10' of histone H3, and is required for chromosome segregation when cells enter into mitosis. Regulates Hox gene expression via histone H2A deubiquitination. Prefers nucleosomal substrates. Does not deubiquitinate histone H2B.,PTM:Ph



## Background

This gene encodes a deubiquitinating enzyme that is phosphorylated at the onset of mitosis and then dephosphorylated at the metaphase/anaphase transition. It can deubiquitinate H2A, one of two major ubiquitinated proteins of chromatin, in vitro and a mutant form of the protein was shown to block cell division. Alternate transcriptional splice variants, encoding different isoforms, have been characterized. [provided by RefSeq, Jul 2008],

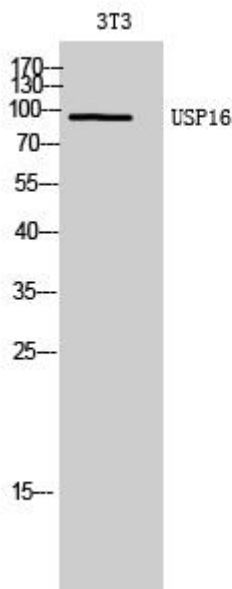
## matters needing attention

Avoid repeated freezing and thawing!

## Usage suggestions

This product can be used in immunological reaction related experiments. For more information, please consult technical personnel.

## Products Images



Western Blot analysis of various cells using USP16 Monoclonal Antibody