

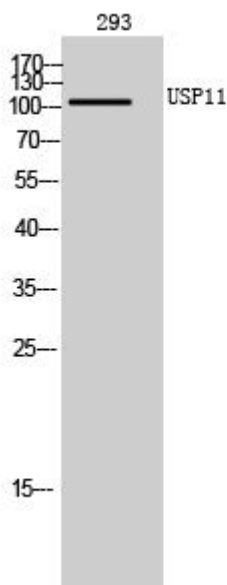


# USP11 Monoclonal Antibody

<b>Catalog No</b>	YP-mAb-02826
<b>Isotype</b>	IgG
<b>Reactivity</b>	Human;Mouse;Rat
<b>Applications</b>	WB
<b>Gene Name</b>	USP11
<b>Protein Name</b>	Ubiquitin carboxyl-terminal hydrolase 11
<b>Immunogen</b>	Synthesized peptide derived from the Internal region of human USP11.
<b>Specificity</b>	USP11 Monoclonal Antibody detects endogenous levels of USP11 protein.
<b>Formulation</b>	Liquid in PBS containing 50% glycerol, 0.5% BSA and 0.02% sodium azide.
<b>Source</b>	Monoclonal, Mouse,IgG
<b>Purification</b>	The antibody was affinity-purified from mouse antiserum by affinity-chromatography using epitope-specific immunogen.
<b>Dilution</b>	WB 1:500-1:2000
<b>Concentration</b>	1 mg/ml
<b>Purity</b>	≥90%
<b>Storage Stability</b>	-20°C/1 year
<b>Synonyms</b>	USP11; UHX1; Ubiquitin carboxyl-terminal hydrolase 11; Deubiquitinating enzyme 11; Ubiquitin thioesterase 11; Ubiquitin-specific-processing protease 11
<b>Observed Band</b>	105kD
<b>Cell Pathway</b>	Nucleus . Cytoplasm . Chromosome . Predominantly nuclear (PubMed:12084015, PubMed:15314155). Associates with chromatin (PubMed:20601937, PubMed:20233726). .
<b>Tissue Specificity</b>	Brain,Fetal brain,Muscle,Retina,
<b>Function</b>	catalytic activity:Ubiquitin C-terminal thioester + H(2)O = ubiquitin + a thiol.,similarity:Belongs to the peptidase C19 family.,similarity:Contains 1 DUSP domain.,subunit:Interacts with RANBP9/RANBPM.,
<b>Background</b>	Protein ubiquitination controls many intracellular processes, including cell cycle progression, transcriptional activation, and signal transduction. This dynamic process, involving ubiquitin conjugating enzymes and deubiquitinating enzymes, adds and removes ubiquitin. Deubiquitinating enzymes are cysteine proteases that specifically cleave ubiquitin from ubiquitin-conjugated protein substrates. This gene encodes a deubiquitinating enzyme which lies in a gene cluster on chromosome Xp11.23 [provided by RefSeq, Jul 2008],
<b>matters needing attention</b>	Avoid repeated freezing and thawing!

**Usage suggestions**

This product can be used in immunological reaction related experiments. For more information, please consult technical personnel.

**Products Images**

Western Blot analysis of various cells using USP11 Monoclonal Antibody