



UMP-CMP Kinase Monoclonal Antibody

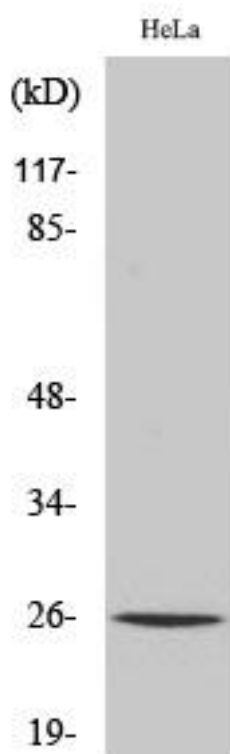
Catalog No	YP-mAb-02825
Isotype	IgG
Reactivity	Human;Mouse;Rat
Applications	WB
Gene Name	CMPK1
Protein Name	UMP-CMP kinase
Immunogen	The antiserum was produced against synthesized peptide derived from human KCY. AA range:1-50
Specificity	UMP-CMP Kinase Monoclonal Antibody detects endogenous levels of UMP-CMP Kinase protein.
Formulation	Liquid in PBS containing 50% glycerol, 0.5% BSA and 0.02% sodium azide.
Source	Monoclonal, Mouse,IgG
Purification	The antibody was affinity-purified from mouse antiserum by affinity-chromatography using epitope-specific immunogen.
Dilution	WB 1:500-1:2000
Concentration	1 mg/ml
Purity	≥90%
Storage Stability	-20°C/1 year
Synonyms	CMPK1; CMK; CMPK; UCK; UMK; UMPK; UMP-CMP kinase; Cytidine monophosphate kinase; Cytidylate kinase; Deoxycytidylate kinase; Uridine monophosphate kinase; Uridine monophosphate/cytidine monophosphate kinase; UMP/CMP kinase; UMP/CMPK
Observed Band	22kD
Cell Pathway	Nucleus . Cytoplasm . Predominantly cytoplasmic, less than 15% nuclear. .
Tissue Specificity	Ubiquitously expressed.
Function	catalytic activity:ATP + (d)CMP = ADP + (d)CDP.,cofactor:Magnesium.,function:Catalyzes specific phosphoryl transfer from ATP to UMP and CMP.,similarity:Belongs to the adenylate kinase family.,subcellular location:Mainly nuclear.,tissue specificity:Ubiquitously expressed.,
Background	This gene encodes one of the enzymes required for cellular nucleic acid biosynthesis. This enzyme catalyzes the transfer of a phosphate group from ATP to CMP, UMP, or dCMP, to form the corresponding diphosphate nucleotide. Alternate splicing results in both coding and non-coding transcript variants. [provided by RefSeq, Feb 2012],

**matters needing attention**

Avoid repeated freezing and thawing!

Usage suggestions

This product can be used in immunological reaction related experiments. For more information, please consult technical personnel.

Products Images

Western Blot analysis of various cells using UMP-CMP Kinase Monoclonal Antibody