



# UBE2T Monoclonal Antibody

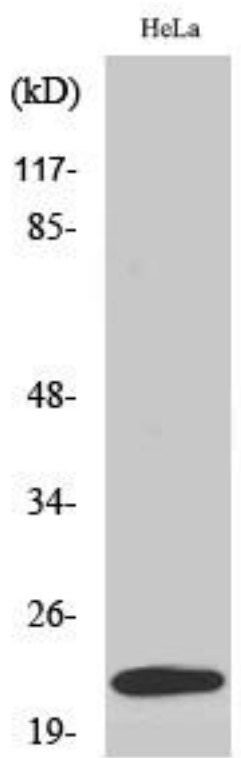
<b>Catalog No</b>	YP-mAb-02814
<b>Isotype</b>	IgG
<b>Reactivity</b>	Human;Mouse
<b>Applications</b>	WB
<b>Gene Name</b>	UBE2T
<b>Protein Name</b>	Ubiquitin-conjugating enzyme E2 T
<b>Immunogen</b>	The antiserum was produced against synthesized peptide derived from human UBE2T. AA range:121-170
<b>Specificity</b>	UBE2T Monoclonal Antibody detects endogenous levels of UBE2T protein.
<b>Formulation</b>	Liquid in PBS containing 50% glycerol, 0.5% BSA and 0.02% sodium azide.
<b>Source</b>	Monoclonal, Mouse,IgG
<b>Purification</b>	The antibody was affinity-purified from mouse antiserum by affinity-chromatography using epitope-specific immunogen.
<b>Dilution</b>	WB 1:500-1:2000
<b>Concentration</b>	1 mg/ml
<b>Purity</b>	≥90%
<b>Storage Stability</b>	-20°C/1 year
<b>Synonyms</b>	UBE2T; HSPC150; PIG50; Ubiquitin-conjugating enzyme E2 T; Cell proliferation-inducing gene 50 protein; Ubiquitin carrier protein T; Ubiquitin-protein ligase T
<b>Observed Band</b>	22kD
<b>Cell Pathway</b>	Nucleus . Accumulates to chromatin.
<b>Tissue Specificity</b>	Adrenal gland,Blood,Carcinoma,Lung,
<b>Function</b>	catalytic activity:ATP + ubiquitin + protein lysine = AMP + diphosphate + protein N-ubiquityllysine.,function:Catalyzes the covalent attachment of ubiquitin to other proteins.,pathway:Protein modification; protein ubiquitination.,similarity:Belongs to the ubiquitin-conjugating enzyme family.,
<b>Background</b>	The protein encoded by this gene catalyzes the covalent attachment of ubiquitin to protein substrates. Defects in this gene have been associated with Fanconi anemia of complementation group T. Two transcript variants encoding different isoforms have been found for this gene. [provided by RefSeq, Jul 2015],
<b>matters needing attention</b>	Avoid repeated freezing and thawing!



### Usage suggestions

This product can be used in immunological reaction related experiments. For more information, please consult technical personnel.

### Products Images



Western Blot analysis of various cells using UBE2T Monoclonal Antibody