



TMPRSS3 Monoclonal Antibody

Catalog No	YP-mAb-02800
Isotype	IgG
Reactivity	Human;Mouse
Applications	WB
Gene Name	TMPRSS3
Protein Name	Transmembrane protease serine 3
Immunogen	The antiserum was produced against synthesized peptide derived from human TMPRSS3. AA range:405-454
Specificity	TMPRSS3 Monoclonal Antibody detects endogenous levels of TMPRSS3 protein.
Formulation	Liquid in PBS containing 50% glycerol, 0.5% BSA and 0.02% sodium azide.
Source	Monoclonal, Mouse,IgG
Purification	The antibody was affinity-purified from mouse antiserum by affinity-chromatography using epitope-specific immunogen.
Dilution	WB 1:500-1:2000
Concentration	1 mg/ml
Purity	≥90%
Storage Stability	-20°C/1 year
Synonyms	TMPRSS3; ECHOS1; TADG12; Transmembrane protease serine 3; Serine protease TADG-12; Tumor-associated differentially-expressed gene 12 protein
Observed Band	49kD
Cell Pathway	Endoplasmic reticulum membrane ; Single-pass type II membrane protein .
Tissue Specificity	Expressed in many tissues including fetal cochlea. Isoform T is found at increased levels in some carcinomas.
Function	disease:Defects in TMPRSS3 are a cause of non-syndromic sensorineural deafness autosomal recessive type 10 (DFNB10) [MIM:605316].,disease:Defects in TMPRSS3 are the cause of non-syndromic sensorineural deafness autosomal recessive type 8 (DFNB8) [MIM:601072]. DFNA8 is a form of sensorineural hearing loss. Sensorineural deafness results from damage to the neural receptors of the inner ear, the nerve pathways to the brain, or the area of the brain that receives sound information.,function:Probable protease. Seems to be caMABLE of activating ENaC.,PTM:Undergoes autoproteolytic activation.,similarity:Belongs to the peptidase S1 family.,similarity:Contains 1 LDL-receptor class A domain.,similarity:Contains 1 peptidase S1 domain.,similarity:Contains 1 SRCR domain.,tissue specificity:Expressed in many tissues including fetal cochlea. Isoform T is found at increased levels in some carcinomas.,



Background

This gene encodes a protein that belongs to the serine protease family. The encoded protein contains a serine protease domain, a transmembrane domain, an LDL receptor-like domain, and a scavenger receptor cysteine-rich domain. Serine proteases are known to be involved in a variety of biological processes, whose malfunction often leads to human diseases and disorders. This gene was identified by its association with both congenital and childhood onset autosomal recessive deafness. This gene is expressed in fetal cochlea and many other tissues, and is thought to be involved in the development and maintenance of the inner ear or the contents of the perilymph and endolymph. This gene was also identified as a tumor-associated gene that is overexpressed in ovarian tumors. Alternatively spliced transcript variants have been described. [provided by RefSeq, Jan 2012],

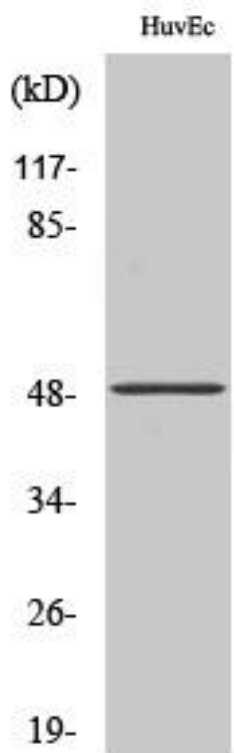
matters needing attention

Avoid repeated freezing and thawing!

Usage suggestions

This product can be used in immunological reaction related experiments. For more information, please consult technical personnel.

Products Images



Western Blot analysis of various cells using TMPRSS3 Monoclonal Antibody