

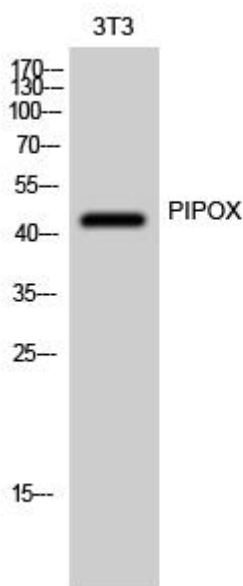


PIPOX Monoclonal Antibody

Catalog No	YP-mAb-02756
Isotype	IgG
Reactivity	Human;Rat;Mouse;
Applications	WB
Gene Name	PIPOX
Protein Name	Peroxisomal sarcosine oxidase
Immunogen	The antiserum was produced against synthesized peptide derived from human PIPOX. AA range:257-306
Specificity	PIPOX Monoclonal Antibody detects endogenous levels of PIPOX protein.
Formulation	Liquid in PBS containing 50% glycerol, 0.5% BSA and 0.02% sodium azide.
Source	Monoclonal, Mouse,IgG
Purification	The antibody was affinity-purified from mouse antiserum by affinity-chromatography using epitope-specific immunogen.
Dilution	WB 1:500-1:2000
Concentration	1 mg/ml
Purity	≥90%
Storage Stability	-20°C/1 year
Synonyms	PIPOX; LPIPOX; PSO; Peroxisomal sarcosine oxidase; PSO; L-pipecolate oxidase; L-pipecolic acid oxidase
Observed Band	44kD
Cell Pathway	Peroxisome .
Tissue Specificity	Expressed in the liver and kidney.
Function	catalytic activity:L-pipecolate + O(2) = 2,3,4,5-tetrahydropyridine-2-carboxylate + H(2)O(2).,catalytic activity:Sarcosine + H(2)O + O(2) = glycine + formaldehyde + H(2)O(2).,cofactor: Binds 1 FAD per subunit.,function:Metabolizes sarcosine, L-pipecolic acid and L-proline.,similarity:Belongs to the MSOX/MTOX family.,subunit:Monomer.,
Background	catalytic activity:L-pipecolate + O(2) = 2,3,4,5-tetrahydropyridine-2-carboxylate + H(2)O(2).,catalytic activity:Sarcosine + H(2)O + O(2) = glycine + formaldehyde + H(2)O(2).,cofactor: Binds 1 FAD per subunit.,function:Metabolizes sarcosine, L-pipecolic acid and L-proline.,similarity:Belongs to the MSOX/MTOX family.,subunit:Monomer.,
matters needing attention	Avoid repeated freezing and thawing!

**Usage suggestions**

This product can be used in immunological reaction related experiments. For more information, please consult technical personnel.

Products Images

Western Blot analysis of various cells using PIPOX Monoclonal Antibody