



# PDE4C Monoclonal Antibody

<b>Catalog No</b>	YP-mAb-02741
<b>Isotype</b>	IgG
<b>Reactivity</b>	Human;Mouse;Rat
<b>Applications</b>	WB
<b>Gene Name</b>	PDE4C
<b>Protein Name</b>	cAMP-specific 3',5'-cyclic phosphodiesterase 4C
<b>Immunogen</b>	The antiserum was produced against synthesized peptide derived from human PDE4C. AA range:291-340
<b>Specificity</b>	PDE4C Monoclonal Antibody detects endogenous levels of PDE4C protein.
<b>Formulation</b>	Liquid in PBS containing 50% glycerol, 0.5% BSA and 0.02% sodium azide.
<b>Source</b>	Monoclonal, Mouse,IgG
<b>Purification</b>	The antibody was affinity-purified from mouse antiserum by affinity-chromatography using epitope-specific immunogen.
<b>Dilution</b>	WB 1:500-1:2000
<b>Concentration</b>	1 mg/ml
<b>Purity</b>	≥90%
<b>Storage Stability</b>	-20°C/1 year
<b>Synonyms</b>	PDE4C; DPDE1; cAMP-specific 3'; 5'-cyclic phosphodiesterase 4C; DPDE1; PDE21
<b>Observed Band</b>	80kD
<b>Cell Pathway</b>	Cell projection, cilium .
<b>Tissue Specificity</b>	Expressed in various tissues but not in cells of the immune system.
<b>Function</b>	catalytic activity:Adenosine 3',5'-cyclic phosphate + H(2)O = adenosine 5'-phosphate.;enzyme regulation:Inhibited by rolipram.;pathway:Purine metabolism; cAMP degradation; AMP from cAMP: step 1/1.;similarity:Belongs to the cyclic nucleotide phosphodiesterase family.;tissue specificity:Expressed in various tissues but not in cells of the immune system.,
<b>Background</b>	The protein encoded by this gene belongs to the cyclic nucleotide phosphodiesterase (PDE) family, and PDE4 subfamily. This PDE hydrolyzes the second messenger, cAMP, which is a regulator and mediator of a number of cellular responses to extracellular signals. Thus, by regulating the cellular concentration of cAMP, this protein plays a key role in many important physiological processes. Alternatively spliced transcript variants encoding different isoforms have been described for this gene.[provided by RefSeq, Jul 2011],



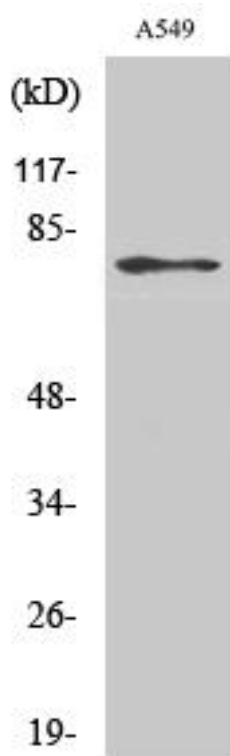
**matters needing attention**

Avoid repeated freezing and thawing!

**Usage suggestions**

This product can be used in immunological reaction related experiments. For more information, please consult technical personnel.

**Products Images**



Western Blot analysis of various cells using PDE4C Monoclonal Antibody