



PDE4B/C/D Monoclonal Antibody

Catalog No	YP-mAb-02740
Isotype	IgG
Reactivity	Human;Mouse;Rat
Applications	WB
Gene Name	PDE4B/PDE4C/PDE4D
Protein Name	cAMP-specific 3',5'-cyclic phosphodiesterase 4D
Immunogen	The antiserum was produced against synthesized peptide derived from human PDE4D. AA range:156-205
Specificity	PDE4B/C/D Monoclonal Antibody detects endogenous levels of PDE4B/C/D protein.
Formulation	Liquid in PBS containing 50% glycerol, 0.5% BSA and 0.02% sodium azide.
Source	Monoclonal, Mouse,IgG
Purification	The antibody was affinity-purified from mouse antiserum by affinity-chromatography using epitope-specific immunogen.
Dilution	WB 1:500-1:2000
Concentration	1 mg/ml
Purity	≥90%
Storage Stability	-20°C/1 year
Synonyms	PDE4B; DPDE4; cAMP-specific 3'; 5'-cyclic phosphodiesterase 4B; DPDE4; PDE32; PDE4C; DPDE1; cAMP-specific 3',5'-cyclic phosphodiesterase 4C; DPDE1; PDE21; PDE4D; DPDE3; cAMP-specific 3',5'-cyclic phosphodiesterase 4D; DPDE3; PDE43
Observed Band	76kD
Cell Pathway	[Isoform PDE4B5]: Cytoplasm . Cell membrane .
Tissue Specificity	Expressed in brain, heart, lung and skeletal muscle (PubMed:17519386). Expressed in white blood cells (PubMed:8392015). ; [Isoform PDE4B5]: Brain-specific isoform.
Function	alternative products:Additional isoforms seem to exist,catalytic activity:Adenosine 3',5'-cyclic phosphate + H(2)O = adenosine 5'-phosphate.,enzyme regulation:Inhibited by rolipram.,function:May be involved in mediating central nervous system effects of therapeutic agents ranging from antidepressants to antiasthmatic and anti-inflammatory agents.,pathway:Purine metabolism; cAMP degradation; AMP from cAMP: step 1/1.,similarity:Belongs to the cyclic nucleotide phosphodiesterase family.,tissue specificity:Expressed in brain, heart, lung and skeletal muscle.,



Background

This gene is a member of the type IV, cyclic AMP (cAMP)-specific, cyclic nucleotide phosphodiesterase (PDE) family. The encoded protein regulates the cellular concentrations of cyclic nucleotides and thereby play a role in signal transduction. Altered activity of this protein has been associated with schizophrenia and bipolar affective disorder. Alternative splicing and the use of alternative promoters results in multiple transcript variants encoding different isoforms. [provided by RefSeq, Jul 2014],

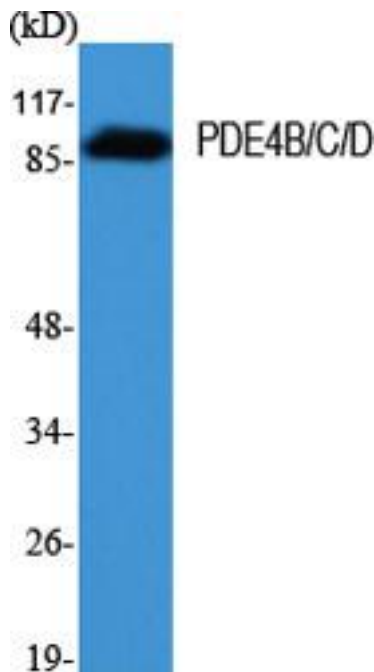
matters needing attention

Avoid repeated freezing and thawing!

Usage suggestions

This product can be used in immunological reaction related experiments. For more information, please consult technical personnel.

Products Images



Western Blot analysis of various cells using PDE4B/C/D Monoclonal Antibody