



# PBFE Monoclonal Antibody

<b>Catalog No</b>	YP-mAb-02733
<b>Isotype</b>	IgG
<b>Reactivity</b>	Human;Mouse;Rat
<b>Applications</b>	WB
<b>Gene Name</b>	EHHADH
<b>Protein Name</b>	Peroxisomal bifunctional enzyme
<b>Immunogen</b>	The antiserum was produced against synthesized peptide derived from human EHHADH. AA range:476-525
<b>Specificity</b>	PBFE Monoclonal Antibody detects endogenous levels of PBFE protein.
<b>Formulation</b>	Liquid in PBS containing 50% glycerol, 0.5% BSA and 0.02% sodium azide.
<b>Source</b>	Monoclonal, Mouse,IgG
<b>Purification</b>	The antibody was affinity-purified from mouse antiserum by affinity-chromatography using epitope-specific immunogen.
<b>Dilution</b>	WB 1:500-1:2000
<b>Concentration</b>	1 mg/ml
<b>Purity</b>	≥90%
<b>Storage Stability</b>	-20°C/1 year
<b>Synonyms</b>	EHHADH; ECHD; Peroxisomal bifunctional enzyme; PBE; PBFE
<b>Observed Band</b>	80kD
<b>Cell Pathway</b>	Peroxisome .
<b>Tissue Specificity</b>	Liver and kidney. Strongly expressed in the terminal segments of the proximal tubule. Lower amounts seen in the brain.
<b>Function</b>	catalytic activity:(3S)-3-hydroxyacyl-CoA = trans-2(or 3)-enoyl-CoA + H(2)O.,catalytic activity:(3Z)-dodec-3-enoyl-CoA = (2E)-dodec-2-enoyl-CoA.,catalytic activity:(S)-3-hydroxyacyl-CoA + NAD(+) = 3-oxoacyl-CoA + NADH.,disease:Absent in patients suffering with peroxisomal disorders such as Zellweger syndrome, neonatal adrenoleukodystrophy and infantile Refsum disease.,pathway:Lipid metabolism; fatty acid beta-oxidation.,similarity:In the C-terminal section; belongs to the 3-hydroxyacyl-CoA dehydrogenase family.,similarity:In the N-terminal section; belongs to the enoyl-CoA hydratase/isomerase family.,subunit:Monomer.,tissue specificity:Liver and kidney. Lower amounts seen in the brain.,
<b>Background</b>	catalytic activity:(3S)-3-hydroxyacyl-CoA = trans-2(or 3)-enoyl-CoA + H(2)O.,catalytic activity:(3Z)-dodec-3-enoyl-CoA = (2E)-dodec-2-enoyl-CoA.,catalytic activity:(S)-3-hydroxyacyl-CoA + NAD(+) = 3-oxoacyl-CoA + NADH.,disease:Absent in patients suffering with peroxisomal



disorders such as Zellweger syndrome, neonatal adrenoleukodystrophy and infantile Refsum disease.,pathway:Lipid metabolism; fatty acid beta-oxidation.,similarity:In the C-terminal section; belongs to the 3-hydroxyacyl-CoA dehydrogenase family.,similarity:In the N-terminal section; belongs to the enoyl-CoA hydratase/isomerase family.,subunit:Monomer.,tissue specificity:Liver and kidney. Lower amounts seen in the brain.,

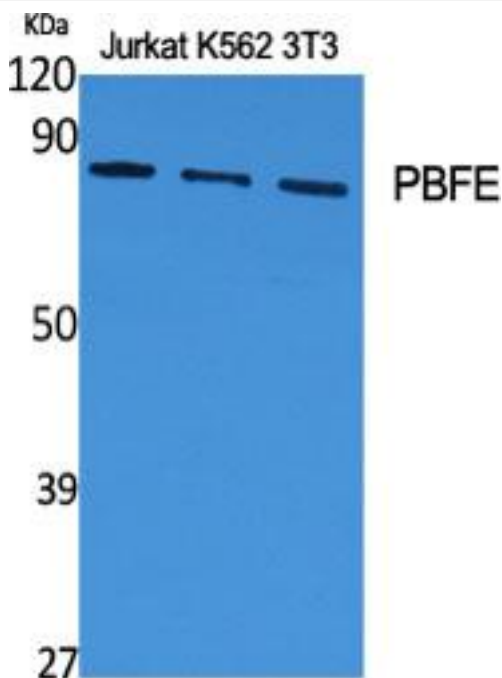
**matters needing attention**

Avoid repeated freezing and thawing!

**Usage suggestions**

This product can be used in immunological reaction related experiments. For more information, please consult technical personnel.

**Products Images**



Western Blot analysis of various cells using PBFE Monoclonal Antibody