



NDUFV2 Monoclonal Antibody

Catalog No	YP-mAb-02712
Isotype	IgG
Reactivity	Human;Mouse;Rat
Applications	WB
Gene Name	NDUFV2
Protein Name	NADH dehydrogenase [ubiquinone] flavoprotein 2 mitochondrial
Immunogen	The antiserum was produced against synthesized peptide derived from human NDUFV2. AA range:20-69
Specificity	NDUFV2 Monoclonal Antibody detects endogenous levels of NDUFV2 protein.
Formulation	Liquid in PBS containing 50% glycerol, 0.5% BSA and 0.02% sodium azide.
Source	Monoclonal, Mouse,IgG
Purification	The antibody was affinity-purified from mouse antiserum by affinity-chromatography using epitope-specific immunogen.
Dilution	WB 1:500-1:2000
Concentration	1 mg/ml
Purity	≥90%
Storage Stability	-20°C/1 year
Synonyms	NDUFV2; NADH dehydrogenase [ubiquinone] flavoprotein 2; mitochondrial; NADH-ubiquinone oxidoreductase 24 kDa subunit
Observed Band	27kD
Cell Pathway	Mitochondrion inner membrane ; Peripheral membrane protein ; Matrix side .
Tissue Specificity	Bone,Lung,
Function	catalytic activity:NADH + acceptor = NAD(+) + reduced acceptor.,catalytic activity:NADH + ubiquinone = NAD(+) + ubiquinol.,cofactor: Binds 1 2Fe-2S cluster .,function:Core subunit of the mitochondrial membrane respiratory chain NADH dehydrogenase (Complex I) that is believed to belong to the minimal assembly required for catalysis. Complex I functions in the transfer of electrons from NADH to the respiratory chain. The immediate electron acceptor for the enzyme is believed to be ubiquinone.,similarity:Belongs to the complex I 24 kDa subunit family.,subunit:Complex I is composed of 45 different subunits. This is a component of the flavoprotein-sulfur (FP) fragment of the enzyme.,
Background	The NADH-ubiquinone oxidoreductase complex (complex I) of the mitochondrial respiratory chain catalyzes the transfer of electrons from NADH to ubiquinone, and consists of at least 43 subunits. The complex is located in the inner mitochondrial membrane. This gene encodes the 24 kDa subunit of complex I, and is involved in electron transfer. Mutations in this gene are implicated in



Parkinson's disease, bipolar disorder, schizophrenia, and have been found in one case of early onset hypertrophic cardiomyopathy and encephalopathy. A non-transcribed pseudogene of this locus is found on chromosome 19. [provided by RefSeq, Oct 2009],

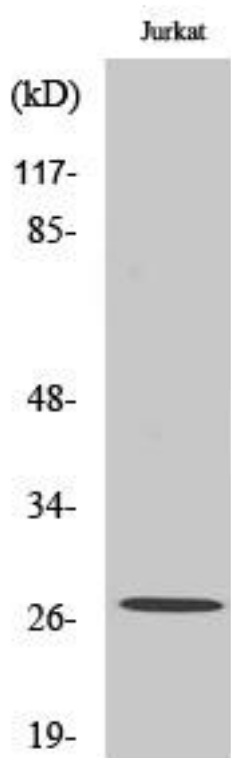
matters needing attention

Avoid repeated freezing and thawing!

Usage suggestions

This product can be used in immunological reaction related experiments. For more information, please consult technical personnel.

Products Images



Western Blot analysis of various cells using NDUFV2 Monoclonal Antibody