



MMP-8 Monoclonal Antibody

Catalog No	YP-mAb-02684
Isotype	IgG
Reactivity	Human;Mouse;Rat
Applications	WB
Gene Name	MMP8
Protein Name	Neutrophil collagenase
Immunogen	The antiserum was produced against synthesized peptide derived from human MMP-8. AA range:418-467
Specificity	MMP-8 Monoclonal Antibody detects endogenous levels of MMP-8 protein.
Formulation	Liquid in PBS containing 50% glycerol, 0.5% BSA and 0.02% sodium azide.
Source	Monoclonal, Mouse,IgG
Purification	The antibody was affinity-purified from mouse antiserum by affinity-chromatography using epitope-specific immunogen.
Dilution	WB 1:500-1:2000
Concentration	1 mg/ml
Purity	≥90%
Storage Stability	-20°C/1 year
Synonyms	MMP8; CLG1; Neutrophil collagenase; Matrix metalloproteinase-8; MMP-8; PMNL collagenase; PMNL-CL
Observed Band	55kD
Cell Pathway	Cytoplasmic granule. Secreted, extracellular space, extracellular matrix . Stored in intracellular granules.
Tissue Specificity	Neutrophils.
Function	catalytic activity:Cleavage of interstitial collagens in the triple helical domain. Unlike EC 3.4.24.7, this enzyme cleaves type III collagen more slowly than type I.,cofactor: Binds 2 zinc ions per subunit.,cofactor: Binds 3 calcium ions per subunit.,domain:The conserved cysteine present in the cysteine-switch motif binds the catalytic zinc ion, thus inhibiting the enzyme. The dissociation of the cysteine from the zinc ion upon the activation-peptide release activates the enzyme.,enzyme regulation: Cannot be activated without removal of the activation peptide.,function: Can degrade fibrillar type I, II, and III collagens.,similarity: Belongs to the peptidase M10A family.,similarity: Contains 4 hemopexin-like domains.,subcellular location: Stored in intracellular granules.,tissue specificity: Neutrophils.,
Background	matrix metalloproteinase 8(MMP8) Homo sapiens This gene encodes a member of the matrix metalloproteinase (MMP) family of proteins. These proteins



are involved in the breakdown of extracellular matrix in embryonic development, reproduction, and tissue remodeling, as well as in disease processes, such as arthritis and metastasis. Proteolysis at different sites on this protein results in multiple active forms of the enzyme with distinct N-termini. This protein functions in the degradation of type I, II and III collagens. The gene is part of a cluster of MMP genes which localize to chromosome 11q22.3. Alternative splicing results in multiple transcript variants. [provided by RefSeq, Jan 2015],

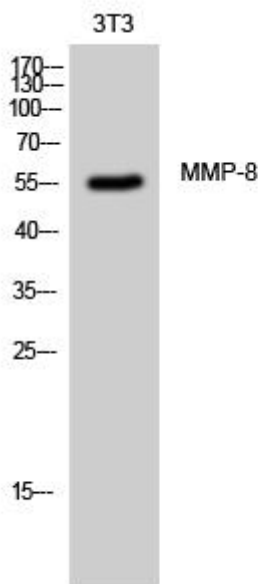
matters needing attention

Avoid repeated freezing and thawing!

Usage suggestions

This product can be used in immunological reaction related experiments. For more information, please consult technical personnel.

Products Images



Western Blot analysis of various cells using MMP-8 Monoclonal Antibody