



MMP-19 Monoclonal Antibody

| | |
|---------------------------|--|
| Catalog No | YP-mAb-02681 |
| Isotype | IgG |
| Reactivity | Human;Mouse |
| Applications | WB |
| Gene Name | MMP19 |
| Protein Name | Matrix metalloproteinase-19 |
| Immunogen | The antiserum was produced against synthesized peptide derived from human MMP-19. AA range:11-60 |
| Specificity | MMP-19 Monoclonal Antibody detects endogenous levels of MMP-19 protein. |
| Formulation | Liquid in PBS containing 50% glycerol, 0.5% BSA and 0.02% sodium azide. |
| Source | Monoclonal, Mouse,IgG |
| Purification | The antibody was affinity-purified from mouse antiserum by affinity-chromatography using epitope-specific immunogen. |
| Dilution | WB 1:500-1:2000 |
| Concentration | 1 mg/ml |
| Purity | ≥90% |
| Storage Stability | -20°C/1 year |
| Synonyms | MMP19; MMP18; RASI; Matrix metalloproteinase-19; MMP-19; Matrix metalloproteinase RASI; Matrix metalloproteinase-18; MMP-18 |
| Observed Band | 57kD |
| Cell Pathway | Secreted, extracellular space, extracellular matrix . |
| Tissue Specificity | Expressed in mammary gland, placenta, lung, pancreas, ovary, small intestine, spleen, thymus, prostate, testis colon, heart and blood vessel walls. Not detected in brain and peripheral blood leukocytes. Also expressed in the synovial fluid of normal and rheumatoid patients (PubMed:8920941). |
| Function | alternative products:Additional isoforms seem to exist,catalytic activity:Cleaves aggrecan at the 360-Ser- -Phe-361 site.,cofactor:Binds 1 zinc ion per subunit.,cofactor:Calcium.,disease:May play a role in pathological processes participating in rheumatoid arthritis (RA)-associated joint tissue destruction. Autoantigen anti-MMP19 are frequent in RA patients.,domain:The conserved cysteine present in the cysteine-switch motif binds the catalytic zinc ion, thus inhibiting the enzyme. The dissociation of the cysteine from the zinc ion upon the activation-peptide release activates the enzyme.,enzyme regulation:Strongly inhibited by TIMP-2, TIMP-3 and TIMP-4, while TIMP-1 is less efficient.,function:Endopeptidase that degrades various components of the extracellular matrix, such as aggrecan and cartilage oligomeric matrix protein (comp), during development, haemostasis and pathological conditi |



Background

This gene encodes a member of a family of proteins that are involved in the breakdown of extracellular matrix in normal physiological processes, such as embryonic development, reproduction, and tissue remodeling, as well as in disease processes, such as arthritis and metastasis. The encoded protein is secreted as an inactive proprotein, which is activated upon cleavage by extracellular proteases. Alternative splicing results in multiple transcript variants for this gene. [provided by RefSeq, Jan 2013],

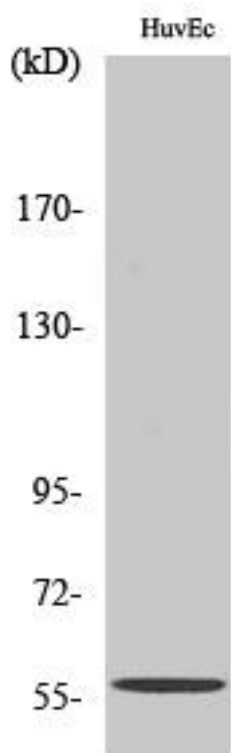
matters needing attention

Avoid repeated freezing and thawing!

Usage suggestions

This product can be used in immunological reaction related experiments. For more information, please consult technical personnel.

Products Images



Western Blot analysis of various cells using MMP-19 Monoclonal Antibody