



# MMP-11 Monoclonal Antibody

<b>Catalog No</b>	YP-mAb-02678
<b>Isotype</b>	IgG
<b>Reactivity</b>	Human;Mouse;Rat
<b>Applications</b>	WB
<b>Gene Name</b>	MMP11
<b>Protein Name</b>	Stromelysin-3
<b>Immunogen</b>	The antiserum was produced against synthesized peptide derived from human MMP-11. AA range:61-110
<b>Specificity</b>	MMP-11 Monoclonal Antibody detects endogenous levels of MMP-11 protein.
<b>Formulation</b>	Liquid in PBS containing 50% glycerol, 0.5% BSA and 0.02% sodium azide.
<b>Source</b>	Monoclonal, Mouse,IgG
<b>Purification</b>	The antibody was affinity-purified from mouse antiserum by affinity-chromatography using epitope-specific immunogen.
<b>Dilution</b>	WB 1:500-1:2000
<b>Concentration</b>	1 mg/ml
<b>Purity</b>	≥90%
<b>Storage Stability</b>	-20°C/1 year
<b>Synonyms</b>	MMP11; STMY3; Stromelysin-3; SL-3; ST3; Matrix metalloproteinase-11; MMP-11
<b>Observed Band</b>	60kD
<b>Cell Pathway</b>	Secreted, extracellular space, extracellular matrix .
<b>Tissue Specificity</b>	Specifically expressed in stromal cells of breast carcinomas.
<b>Function</b>	cofactor: Binds 1 calcium ion per subunit.,cofactor: Binds 2 zinc ions per subunit.,domain: The conserved cysteine present in the cysteine-switch motif binds the catalytic zinc ion, thus inhibiting the enzyme. The dissociation of the cysteine from the zinc ion upon the activation-peptide release activates the enzyme.,function: May play an important role in the progression of epithelial malignancies.,PTM: The precursor is cleaved by a furin endopeptidase.,similarity: Belongs to the peptidase M10A family.,similarity: Contains 4 hemopexin-like domains.,tissue specificity: Specifically expressed in stromal cells of breast carcinomas.,
<b>Background</b>	Proteins of the matrix metalloproteinase (MMP) family are involved in the breakdown of extracellular matrix in normal physiological processes, such as embryonic development, reproduction, and tissue remodeling, as well as in disease processes, such as arthritis and metastasis. Most MMP's are secreted as inactive proproteins which are activated when cleaved by extracellular



proteinases. However, the enzyme encoded by this gene is activated intracellularly by furin within the constitutive secretory pathway. Also in contrast to other MMP's, this enzyme cleaves alpha 1-proteinase inhibitor but weakly degrades structural proteins of the extracellular matrix. [provided by RefSeq, Jul 2008],

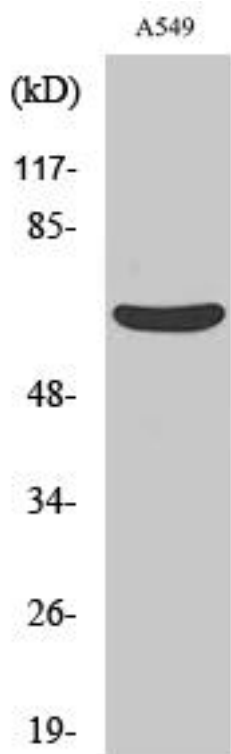
**matters needing attention**

Avoid repeated freezing and thawing!

**Usage suggestions**

This product can be used in immunological reaction related experiments. For more information, please consult technical personnel.

## Products Images



Western Blot analysis of various cells using MMP-11 Monoclonal Antibody